



ELECTRONIC COPY

LG655441715
Report verification at igi.org



October 1, 2024
IGI Report Number: LG655441715
Description: LABORATORY GROWN DIAMOND
Shape and Cutting Style: CUT CORNERED RECTANGULAR MODIFIED BRILLIANT
Measurements: 8.68 X 5.84 X 3.91 MM
GRADING RESULTS
Carat Weight: 1.67 CARAT
Color Grade: E
Clarity Grade: VS 1

LABORATORY GROWN DIAMOND REPORT

October 1, 2024
IGI Report Number: LG655441715
Description: LABORATORY GROWN DIAMOND
Shape and Cutting Style: CUT CORNERED RECTANGULAR MODIFIED BRILLIANT
Measurements: 8.68 X 5.84 X 3.91 MM

GRADING RESULTS

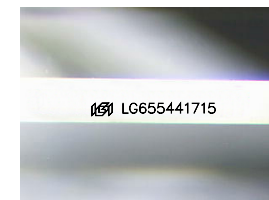
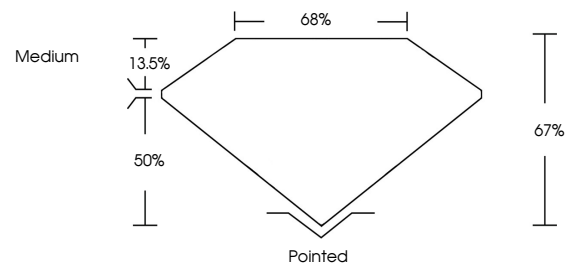
Carat Weight: 1.67 CARAT
Color Grade: E
Clarity Grade: VS 1

ADDITIONAL GRADING INFORMATION

Polish: EXCELLENT
Symmetry: EXCELLENT
Fluorescence: NONE
Inscription(s): IGI LG655441715

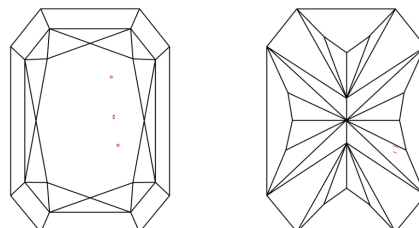
Comments: This Laboratory Grown Diamond was created by Chemical Vapor Deposition (CVD) growth process. Type IIa

PROPORTIONS



Sample Image Used

CLARITY CHARACTERISTICS



KEY TO SYMBOLS

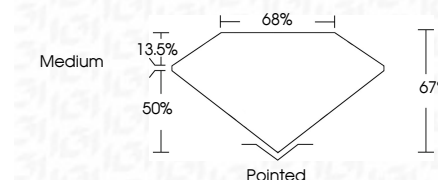
Red symbols indicate internal characteristics.
Green symbols indicate external characteristics.

COLOR

D E F G H I J Faint Very Light Light

CLARITY

Table with columns for clarity grades: IF, VS 1-2, VS 1-2, SI 1-2, I 1-3. Rows for Internally Flawless, Very Very Slightly Included, Very Slightly Included, Slightly Included, Included.



ADDITIONAL GRADING INFORMATION

Polish: EXCELLENT
Symmetry: EXCELLENT
Fluorescence: NONE
Inscription(s): IGI LG655441715
Comments: This Laboratory Grown Diamond was created by Chemical Vapor Deposition (CVD) growth process. Type IIa



October 1, 2024
IGI Report No LG655441715
CUT CORNERED RECT. MODIFIED BRILLIANT
8.68 X 5.84 X 3.91 MM
1.67 CARAT
E
VS 1
67%
65%
Medium
Pointed
EXCELLENT
EXCELLENT
NONE
IGI LG655441715

Comments: This Laboratory Grown Diamond was created by Chemical Vapor Deposition (CVD) growth process. Type IIa