



ELECTRONIC COPY

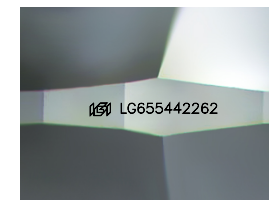
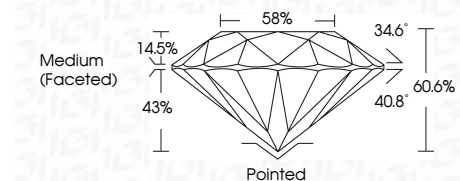
LG655442262
Report verification at igi.org



October 9, 2024
IGI Report Number LG655442262
Description LABORATORY GROWN DIAMOND
Shape and Cutting Style ROUND BRILLIANT
Measurements 9.87 - 9.89 X 5.99 MM

GRADING RESULTS

Carat Weight 3.57 CARATS
Color Grade F
Clarity Grade SI 1
Cut Grade IDEAL



Sample Image Used

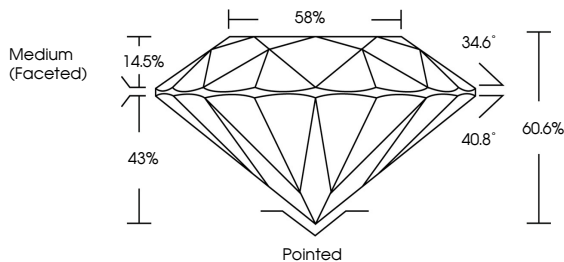
ADDITIONAL GRADING INFORMATION

Polish EXCELLENT
Symmetry EXCELLENT
Fluorescence NONE
Inscription(s) IGI LG655442262
Comments: This Laboratory Grown Diamond was created by Chemical Vapor Deposition (CVD) growth process. Type IIa

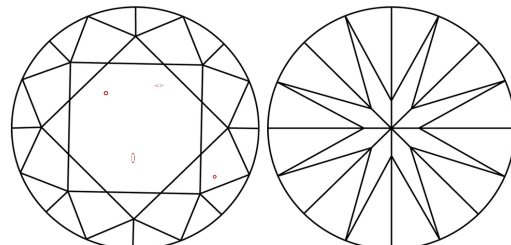


Table with 2 columns: Property and Value. Includes Carat Weight (3.57 CARATS), Color Grade (F), Clarity Grade (SI 1), Depth (60.6%), Table (58%), Girdle (Medium (Faceted)), and other grading details.

PROPORTIONS



CLARITY CHARACTERISTICS



KEY TO SYMBOLS

Red symbols indicate internal characteristics.
Green symbols indicate external characteristics.

COLOR

D E F G H I J Faint Very Light Light

CLARITY

IF VS 1-2 VS 1-2 SI 1-2 I 1-3
Internally Flawless Very Very Slightly Included Very Slightly Included Slightly Included Included



October 9, 2024
IGI Report Number LG655442262
Description LABORATORY GROWN DIAMOND
Shape and Cutting Style ROUND BRILLIANT
Measurements 9.87 - 9.89 X 5.99 MM

GRADING RESULTS

Carat Weight 3.57 CARATS
Color Grade F
Clarity Grade SI 1
Cut Grade IDEAL

ADDITIONAL GRADING INFORMATION

Polish EXCELLENT
Symmetry EXCELLENT
Fluorescence NONE
Inscription(s) IGI LG655442262

Comments: This Laboratory Grown Diamond was created by Chemical Vapor Deposition (CVD) growth process. Type IIa