



ELECTRONIC COPY

LG655442619
Report verification at igi.org



October 1, 2024

IGI Report Number **LG655442619**

Description **LABORATORY GROWN DIAMOND**

Shape and Cutting Style **ROUND BRILLIANT**

Measurements **6.41 - 6.46 X 3.98 MM**

GRADING RESULTS

Carat Weight **1.02 CARAT**

Color Grade **D**

Clarity Grade **VVS 1**

Cut Grade **IDEAL**

October 1, 2024
IGI Report Number **LG655442619**
Description **LABORATORY GROWN DIAMOND**
Shape and Cutting Style **ROUND BRILLIANT**
Measurements **6.41 - 6.46 X 3.98 MM**

GRADING RESULTS

Carat Weight **1.02 CARAT**

Color Grade **D**

Clarity Grade **VVS 1**

Cut Grade **IDEAL**

ADDITIONAL GRADING INFORMATION

Polish **EXCELLENT**

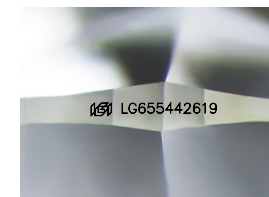
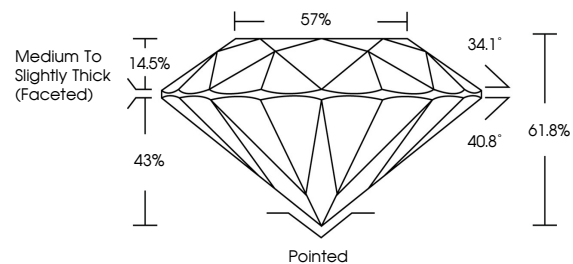
Symmetry **EXCELLENT**

Fluorescence **NONE**

Inscription(s) **IGI LG655442619**

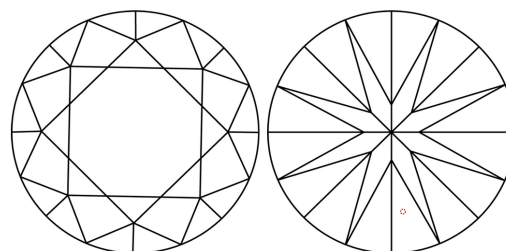
Comments: As Grown - No indication of post-growth treatment.
This Laboratory Grown Diamond was created by High Pressure High Temperature (HPHT) growth process.
Type II

PROPORTIONS



Sample Image Used

CLARITY CHARACTERISTICS



KEY TO SYMBOLS

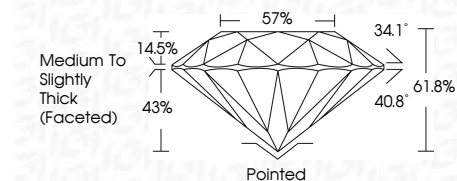
Red symbols indicate internal characteristics.
Green symbols indicate external characteristics.

COLOR

D E F G H I J Faint Very Light Light

CLARITY

IF	VS ¹⁻²	VS ¹⁻²	SI ¹⁻²	I ¹⁻³
Internally Flawless	Very Very Slightly Included	Very Slightly Included	Slightly Included	Included



ADDITIONAL GRADING INFORMATION

Polish **EXCELLENT**

Symmetry **EXCELLENT**

Fluorescence **NONE**

Inscription(s) **IGI LG655442619**

Comments: As Grown - No indication of post-growth treatment.
This Laboratory Grown Diamond was created by High Pressure High Temperature (HPHT) growth process.
Type II



IGI



October 1, 2024
IGI Report No **LG655442619**
ROUND BRILLIANT
6.41 - 6.46 X 3.98 MM
1.02 CARAT
D
VVS 1
IDEAL
61.8%
57%
Medium To Slightly Thick (Faceted)
Pointed
EXCELLENT
EXCELLENT
NONE
IGI LG655442619
Comments: As Grown - No indication of post-growth treatment.
This Laboratory Grown Diamond was created by High Pressure High Temperature (HPHT) growth process.
Type II