



ELECTRONIC COPY

LABORATORY GROWN DIAMOND REPORT

October 2, 2024	
IGI Report Number	LG655442950
Description	LABORATORY GROWN DIAMOND
Shape and Cutting Style	CUT CORNERED RECTANGULAR MODIFIED BRILLIANT
Measurements	8.65 X 6.31 X 4.18 MM

GRADING RESULTS

Carat Weight	1.92 CARAT
Color Grade	F
Clarity Grade	VS 2

ADDITIONAL GRADING INFORMATION

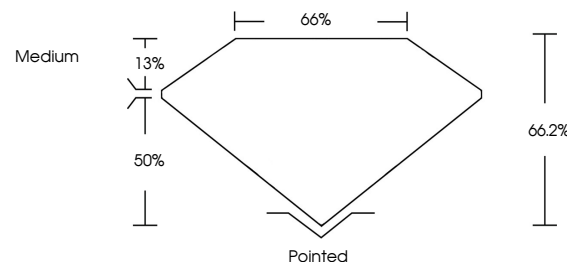
Polish	EXCELLENT
Symmetry	EXCELLENT
Fluorescence	NONE

Inscription(s)  LG655442950

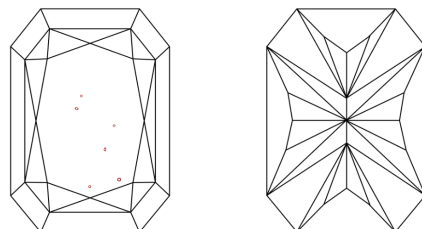
Comments: This Laboratory Grown Diamond was created by Chemical Vapor Deposition (CVD) growth process.
Type IIa

LG655442950
Report verification at lgi.org

PROPORTIONS

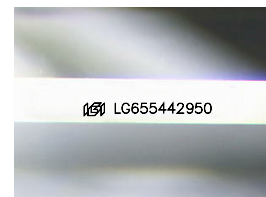


CLARITY CHARACTERISTICS



KEY TO SYMBOLS

Red symbols indicate internal characteristics.
Green symbols indicate external characteristics.



Sample Image Used

COLOR

D E F G H I J Faint Very Light Light

CLARITY

IF	VVS ^{1,2}	VS ^{1,2}	SI ^{1,2}	I ^{1,3}
Internally Flawless	Very Very Slightly Included	Very Slightly Included	Slightly Included	Included



© IGI 2020, International Gemological Institute

FD - 10 20

www.igi.org

LABORATORY GROWN DIAMOND REPORT



October 2, 2024

IGI Report Number **LG655442950**

Description	LABORATORY GROWN DIAMOND
-------------	--------------------------

Shape and Cutting Style

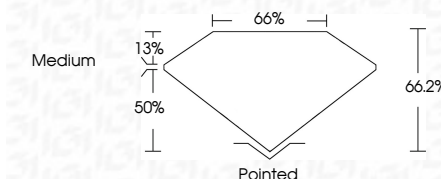
Measurements **8.65 X 6.31 X 4.18 MM**

GRADING RESULTS

Carat Weight 1.92 CARAT

Color Grade

Clarity Grade VS 2



ADDITIONAL GRADING INFORMATION

Polish **EXCELLENCE**Symmetry **EXCELLENCE**

Fluorescence NON

Inscription(s)  LG65544295

Comments: This Laboratory Grown Diamond was created by Chemical Vapor Deposition (CVD) growth process.
Type IIa



October 2, 2024	GI REPORTED RECT. MODIFIED BRILLIANT
GI CORNER NO LG565442950	
1.92 CARAT	
VS 2	
66.2%	
66%	
Medium	
Pointed	
EXCELLENT	
EXCELLENT	
NONE	
1601 LG565442950	

Comments:

The Laboratory Grown Diamond was
 analyzed using Laser Vapor Deposition
 (LVD) growth process.
 type IIG