



ELECTRONIC COPY

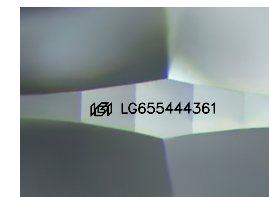
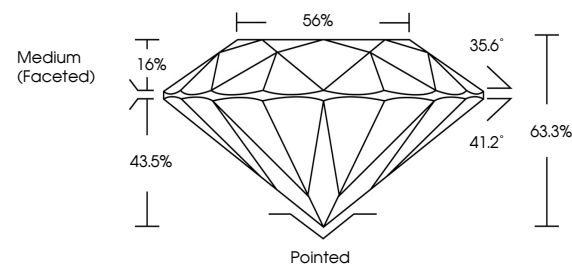
LG655444361 Report verification at igi.org



October 1, 2024
IGI Report Number LG655444361
Description LABORATORY GROWN DIAMOND
Shape and Cutting Style ROUND BRILLIANT
Measurements 7.24 - 7.35 X 4.62 MM
GRADING RESULTS
Carat Weight 1.51 CARAT
Color Grade D
Clarity Grade VS 1
Cut Grade EXCELLENT

October 1, 2024
IGI Report Number LG655444361
Description LABORATORY GROWN DIAMOND
Shape and Cutting Style ROUND BRILLIANT
Measurements 7.24 - 7.35 X 4.62 MM

PROPORTIONS

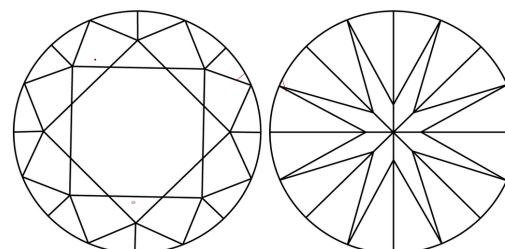


Sample Image Used

GRADING RESULTS

Carat Weight 1.51 CARAT
Color Grade D
Clarity Grade VS 1
Cut Grade EXCELLENT

CLARITY CHARACTERISTICS



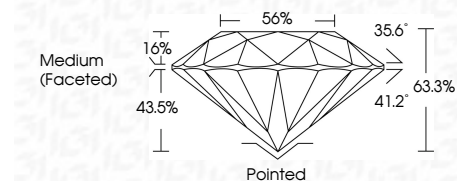
KEY TO SYMBOLS

Red symbols indicate internal characteristics.
Green symbols indicate external characteristics.

ADDITIONAL GRADING INFORMATION

Polish EXCELLENT
Symmetry VERY GOOD
Fluorescence NONE
Inscription(s) IGI LG655444361

Comments: As Grown - No indication of post-growth treatment.
This Laboratory Grown Diamond was created by High Pressure High Temperature (HPHT) growth process.
Type II



ADDITIONAL GRADING INFORMATION

Polish EXCELLENT
Symmetry VERY GOOD
Fluorescence NONE
Inscription(s) IGI LG655444361
Comments: As Grown - No indication of post-growth treatment.
This Laboratory Grown Diamond was created by High Pressure High Temperature (HPHT) growth process.
Type II

COLOR

D E F G H I J Faint Very Light Light

CLARITY

IF VS 1-2 VS 1-2 SI 1-2 I 1-3
Internally Flawless Very Very Slightly Included Very Slightly Included Slightly Included Included



October 1, 2024
IGI Report No LG655444361
ROUND BRILLIANT
7.24 - 7.35 X 4.62 MM
1.51 CARAT
Color Grade D
Clarity Grade VS 1
Depth 63.3%
Table 56%
Medium (Faceted)
Cutler Pointed
Polish EXCELLENT
Symmetry VERY GOOD
Fluorescence NONE
Inscriptions(s) IGI LG655444361
Comments: As Grown - No indication of post-growth treatment.
This Laboratory Grown Diamond was created by High Pressure High Temperature (HPHT) growth process.
Type II