



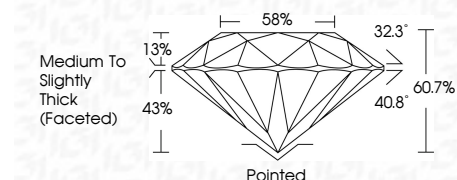
ELECTRONIC COPY

LG655445103 Report verification at igi.org



October 1, 2024 IGI Report Number LG655445103 Description LABORATORY GROWN DIAMOND Shape and Cutting Style ROUND BRILLIANT Measurements 6.57 - 6.62 X 4.01 MM

GRADING RESULTS Carat Weight 1.09 CARAT Color Grade E Clarity Grade VVS 2 Cut Grade EXCELLENT

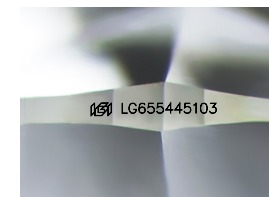


ADDITIONAL GRADING INFORMATION Polish EXCELLENT Symmetry EXCELLENT Fluorescence NONE Inscription(s) LG655445103 Comments: This Laboratory Grown Diamond was created by Chemical Vapor Deposition (CVD) growth process. Type IIa



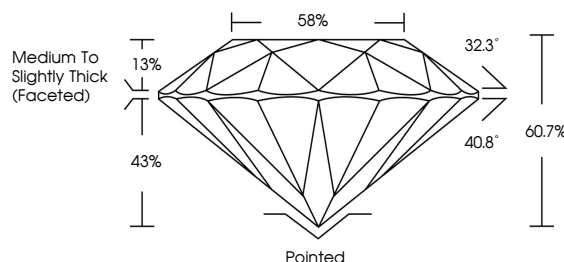
October 1, 2024 IGI Report No LG655445103 ROUND BRILLIANT 6.57 - 6.62 X 4.01 MM 1.09 CARAT E VVS 2 EXCELLENT 60.7% 58% Medium To Slightly Thick (Faceted) Pointed EXCELLENT EXCELLENT NONE NONE LG655445103

Comments: This Laboratory Grown Diamond was created by Chemical Vapor Deposition (CVD) growth process. Type IIa

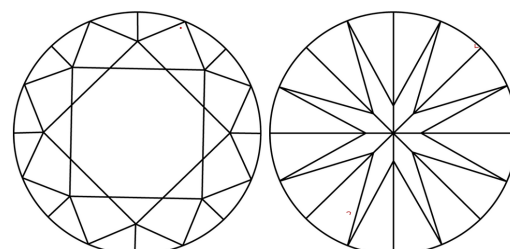


Sample Image Used

PROPORTIONS



CLARITY CHARACTERISTICS



KEY TO SYMBOLS

Red symbols indicate internal characteristics. Green symbols indicate external characteristics.

COLOR

D E F G H I J Faint Very Light Light

CLARITY

IF VVS 1-2 VS 1-2 SI 1-2 I 1-3 Internally Flawless Very Very Slightly Included Very Slightly Included Slightly Included Included

