



ELECTRONIC COPY

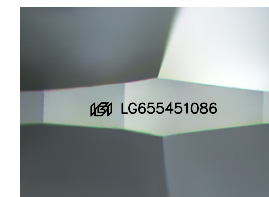
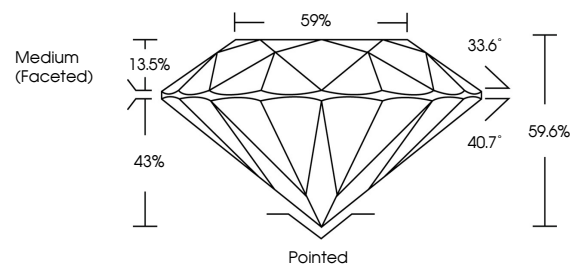
LG655451086
Report verification at igi.org



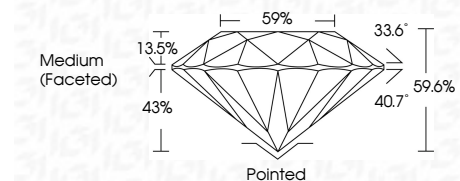
October 1, 2024
IGI Report Number LG655451086
Description LABORATORY GROWN DIAMOND
Shape and Cutting Style ROUND BRILLIANT
Measurements 8.70 - 8.74 X 5.20 MM
GRADING RESULTS
Carat Weight 2.41 CARATS
Color Grade D
Clarity Grade VS 1
Cut Grade IDEAL

October 1, 2024
IGI Report Number LG655451086
Description LABORATORY GROWN DIAMOND
Shape and Cutting Style ROUND BRILLIANT
Measurements 8.70 - 8.74 X 5.20 MM

PROPORTIONS



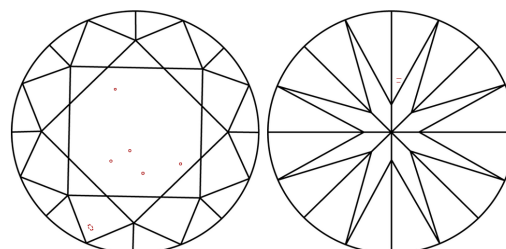
Sample Image Used



GRADING RESULTS

Carat Weight 2.41 CARATS
Color Grade D
Clarity Grade VS 1
Cut Grade IDEAL

CLARITY CHARACTERISTICS



KEY TO SYMBOLS

Red symbols indicate internal characteristics.
Green symbols indicate external characteristics.

ADDITIONAL GRADING INFORMATION

Polish EXCELLENT
Symmetry EXCELLENT
Fluorescence NONE
Inscription(s) IGI LG655451086

ADDITIONAL GRADING INFORMATION

Polish EXCELLENT
Symmetry EXCELLENT
Fluorescence NONE
Inscription(s) IGI LG655451086
Comments: This Laboratory Grown Diamond was created by Chemical Vapor Deposition (CVD) growth process. Type IIa

COLOR

D E F G H I J Faint Very Light Light

CLARITY

IF VS 1-2 VS 1-2 SI 1-2 I 1-3
Internally Flawless Very Very Slightly Included Very Slightly Included Slightly Included Included



IGI

Summary of report details including date, report number, description, measurements, grading results, and additional information.

Comments: This Laboratory Grown Diamond was created by Chemical Vapor Deposition (CVD) growth process. Type IIa