



**INTERNATIONAL  
GEMOLOGICAL  
INSTITUTE**

**LABORATORY GROWN DIAMOND REPORT**

October 11, 2024

IGI Report Number **LG655452047**

Description **LABORATORY GROWN DIAMOND**

Shape and Cutting Style **CUT CORNERED RECTANGULAR MODIFIED  
BRILLIANT**

Measurements **6.97 X 4.91 X 3.45 MM**

**GRADING RESULTS**

Carat Weight **0.97 CARAT**

Color Grade **FANCY VIVID YELLOW**

Clarity Grade **VS 2**

**ADDITIONAL GRADING INFORMATION**

Polish **EXCELLENT**

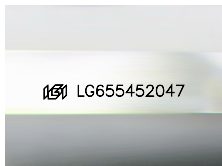
Symmetry **EXCELLENT**

Fluorescence **VERY SLIGHT**

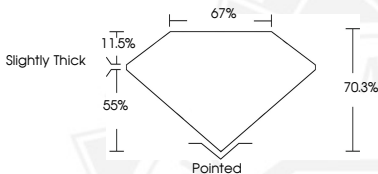
Inscription(s) **IGI LG655452047**

Comments: This Laboratory Grown Diamond was created by Chemical Vapor Deposition (CVD) growth process. Indications of post-growth treatment.

**ELECTRONIC COPY**



Sample Image Used



October 11, 2024

IGI Report Number **LG655452047**

**CUT CORNERED RECTANGULAR  
MODIFIED BRILLIANT**

**LABORATORY GROWN DIAMOND**

**6.97 X 4.91 X 3.45 MM**

Carat Weight **0.97 CARAT**

Color Grade **FANCY VIVID  
YELLOW**

Clarity Grade **VS 2**

Polish **EXCELLENT**

Symmetry **EXCELLENT**

Fluorescence **VERY SLIGHT**

Inscription(s) **IGI LG655452047**

Comments: This Laboratory Grown Diamond was created by Chemical Vapor Deposition (CVD) growth process. Indications of post-growth treatment.



October 11, 2024

IGI Report Number **LG655452047**

**CUT CORNERED RECTANGULAR  
MODIFIED BRILLIANT**

**LABORATORY GROWN DIAMOND**

**6.97 X 4.91 X 3.45 MM**

Carat Weight **0.97 CARAT**

Color Grade **FANCY VIVID  
YELLOW**

Clarity Grade **VS 2**

Polish **EXCELLENT**

Symmetry **EXCELLENT**

Fluorescence **VERY SLIGHT**

Inscription(s) **IGI LG655452047**

Comments: This Laboratory Grown Diamond was created by Chemical Vapor Deposition (CVD) growth process. Indications of post-growth treatment.



THIS DOCUMENT WAS PRODUCED WITH THE FOLLOWING SECURITY MEASURES: SPECIAL DOCUMENT PAPER, INK SCREENS, WATERMARK, BACKGROUND DESIGN, HOLOGRAM AND OTHER SECURITY FEATURES NOT LISTED AND DO EXCEED DOCUMENT SECURITY INDUSTRY GUIDELINES.

For terms & conditions and to verify this report, please visit [www.igi.org](http://www.igi.org)