



**ELECTRONIC COPY**

LG655453323  
Report verification at igi.org



October 9, 2024

IGI Report Number **LG655453323**

Description **LABORATORY GROWN DIAMOND**

Shape and Cutting Style **CUT CORNERED  
RECTANGULAR MODIFIED  
BRILLIANT**

Measurements **8.93 X 6.28 X 4.05 MM**

**GRADING RESULTS**

Carat Weight **2.09 CARATS**

Color Grade **FANCY INTENSE YELLOW**

Clarity Grade **VS 1**

October 9, 2024

IGI Report Number **LG655453323**

Description **LABORATORY GROWN DIAMOND**

Shape and Cutting Style **CUT CORNERED RECTANGULAR  
MODIFIED BRILLIANT**

Measurements **8.93 X 6.28 X 4.05 MM**

**GRADING RESULTS**

Carat Weight **2.09 CARATS**

Color Grade **FANCY INTENSE YELLOW**

Clarity Grade **VS 1**

**ADDITIONAL GRADING INFORMATION**

Polish **EXCELLENT**

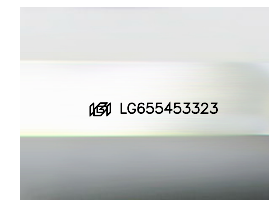
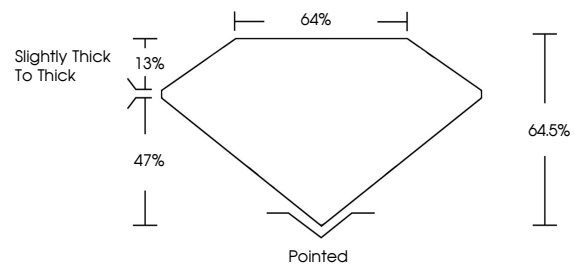
Symmetry **EXCELLENT**

Fluorescence **NONE**

Inscription(s) **IGI LG655453323**

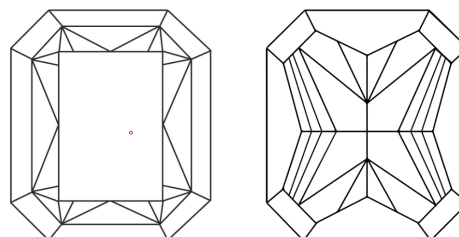
Comments: This Laboratory Grown Diamond was created by Chemical Vapor Deposition (CVD) growth process.

**PROPORTIONS**



Sample Image Used

**CLARITY CHARACTERISTICS**



**KEY TO SYMBOLS**

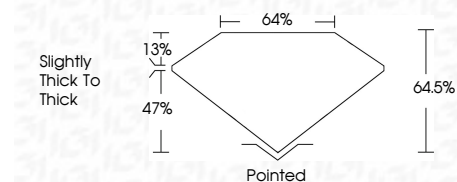
Red symbols indicate internal characteristics.  
Green symbols indicate external characteristics.

**COLOR**

D E F G H I J Faint Very Light Light

**CLARITY**

IF	VS <sup>1-2</sup>	VS <sup>1-2</sup>	SI <sup>1-2</sup>	I <sup>1-3</sup>
Internally Flawless	Very Very Slightly Included	Very Slightly Included	Slightly Included	Included



**ADDITIONAL GRADING INFORMATION**

Polish **EXCELLENT**

Symmetry **EXCELLENT**

Fluorescence **NONE**

Inscription(s) **IGI LG655453323**

Comments: This Laboratory Grown Diamond was created by Chemical Vapor Deposition (CVD) growth process.



**IGI**



October 9, 2024	IGI Report No LG655453323	CUT CORNERED RECT. MODIFIED BRILLIANT	8.93 X 6.28 X 4.05 MM	2.09 CARATS	FANCY INTENSE YELLOW	VS 1	64.5%	47%	Slightly Thick To Thick	Pointed	EXCELLENT	EXCELLENT	NONE	IGI LG655453323

Comments: This Laboratory Grown Diamond was created by Chemical Vapor Deposition (CVD) growth process.