



ELECTRONIC COPY

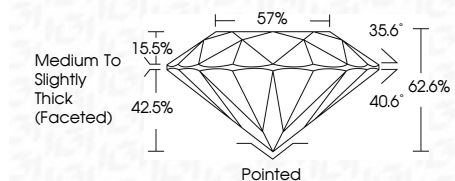
LG655454032
Report verification at igi.org



October 2, 2024
IGI Report Number LG655454032
Description LABORATORY GROWN DIAMOND
Shape and Cutting Style ROUND BRILLIANT
Measurements 7.95 - 8.01 X 5.00 MM

GRADING RESULTS

Carat Weight 2.00 CARATS
Color Grade D
Clarity Grade VS 1
Cut Grade EXCELLENT

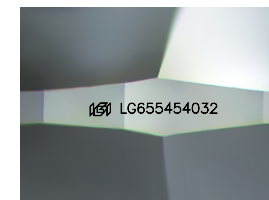


ADDITIONAL GRADING INFORMATION

Polish EXCELLENT
Symmetry EXCELLENT
Fluorescence NONE
Inscription(s) IGI LG655454032
Comments: This Laboratory Grown Diamond was created by Chemical Vapor Deposition (CVD) growth process. Type IIa

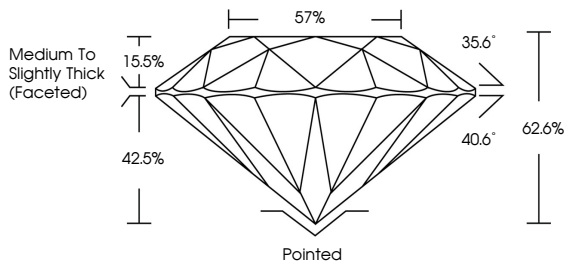


October 2, 2024
IGI Report No LG655454032
ROUND BRILLIANT
2.00 CARATS
D
2.00 CARATS
D
EXCELLENT
EXCELLENT
EXCELLENT
EXCELLENT
NONE
IGI LG655454032
Comments: This Laboratory Grown Diamond was created by Chemical Vapor Deposition (CVD) growth process. Type IIa

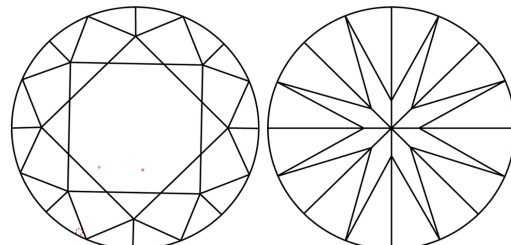


Sample Image Used

PROPORTIONS



CLARITY CHARACTERISTICS



KEY TO SYMBOLS

Red symbols indicate internal characteristics.
Green symbols indicate external characteristics.

COLOR

D E F G H I J Faint Very Light Light

CLARITY

IF VS 1-2 VS 1-2 SI 1-2 I 1-3
Internally Flawless Very Very Slightly Included Very Slightly Included Slightly Included Included

