



ELECTRONIC COPY

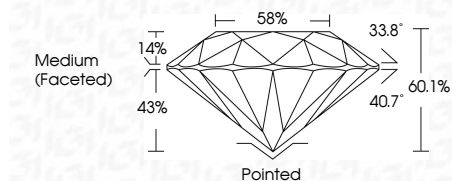
LG655454111
Report verification at igi.org



October 4, 2024
IGI Report Number LG655454111
Description LABORATORY GROWN DIAMOND
Shape and Cutting Style ROUND BRILLIANT
Measurements 8.15 - 8.21 X 4.93 MM

GRADING RESULTS

Carat Weight 2.00 CARATS
Color Grade E
Clarity Grade VVS 1
Cut Grade IDEAL



ADDITIONAL GRADING INFORMATION

Polish EXCELLENT
Symmetry EXCELLENT
Fluorescence NONE
Inscription(s) IGI LG655454111
Comments: This Laboratory Grown Diamond was created by Chemical Vapor Deposition (CVD) growth process. Type IIa



Summary table of diamond characteristics: 2.00 CARATS, E, VVS 1, IDEAL, 60.1%, 58%, Medium (Faceted), Pointed, EXCELLENT, EXCELLENT, NONE, IGI LG655454111

October 4, 2024
IGI Report No LG655454111
ROUND BRILLIANT
8.15 - 8.21 X 4.93 MM
2.00 CARATS
E
VVS 1
IDEAL
60.1%
58%
Medium (Faceted)
Pointed
EXCELLENT
EXCELLENT
NONE
IGI LG655454111
Comments: This Laboratory Grown Diamond was created by Chemical Vapor Deposition (CVD) growth process. Type IIa

October 4, 2024
IGI Report Number LG655454111
Description LABORATORY GROWN DIAMOND
Shape and Cutting Style ROUND BRILLIANT
Measurements 8.15 - 8.21 X 4.93 MM

GRADING RESULTS

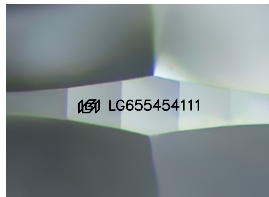
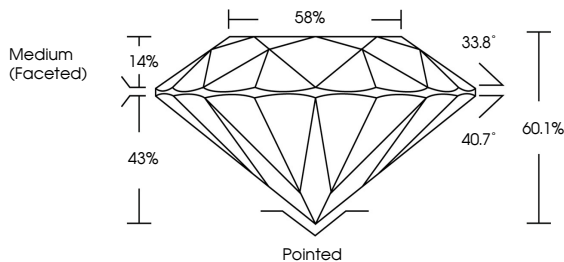
Carat Weight 2.00 CARATS
Color Grade E
Clarity Grade VVS 1
Cut Grade IDEAL

ADDITIONAL GRADING INFORMATION

Polish EXCELLENT
Symmetry EXCELLENT
Fluorescence NONE
Inscription(s) IGI LG655454111

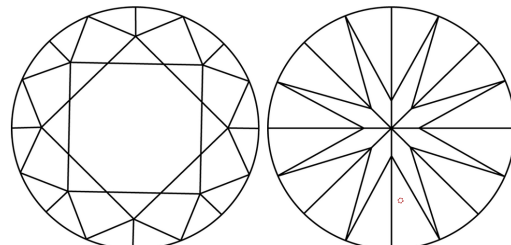
Comments: This Laboratory Grown Diamond was created by Chemical Vapor Deposition (CVD) growth process. Type IIa

PROPORTIONS



Sample Image Used

CLARITY CHARACTERISTICS



KEY TO SYMBOLS

Red symbols indicate internal characteristics.
Green symbols indicate external characteristics.

COLOR

D E F G H I J Faint Very Light Light

CLARITY

IF VVS 1-2 VS 1-2 SI 1-2 I 1-3
Internally Flawless Very Very Slightly Included Very Slightly Included Slightly Included Included

