



**ELECTRONIC COPY**

LG655454152  
Report verification at igi.org



October 9, 2024  
IGI Report Number **LG655454152**  
Description **LABORATORY GROWN DIAMOND**  
Shape and Cutting Style **CUSHION BRILLIANT**  
Measurements **9.03 X 7.67 X 5.16 MM**  
**GRADING RESULTS**  
Carat Weight **3.06 CARATS**  
Color Grade **FANCY INTENSE YELLOW**  
Clarity Grade **VVS 2**

**LABORATORY GROWN DIAMOND REPORT**

October 9, 2024  
IGI Report Number **LG655454152**  
Description **LABORATORY GROWN DIAMOND**  
Shape and Cutting Style **CUSHION BRILLIANT**  
Measurements **9.03 X 7.67 X 5.16 MM**

**GRADING RESULTS**

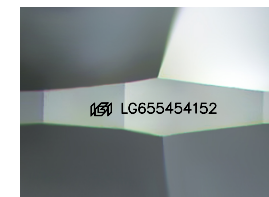
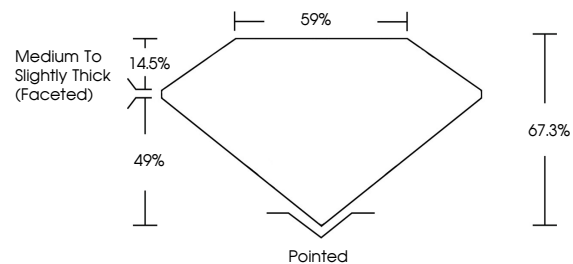
Carat Weight **3.06 CARATS**  
Color Grade **FANCY INTENSE YELLOW**  
Clarity Grade **VVS 2**

**ADDITIONAL GRADING INFORMATION**

Polish **EXCELLENT**  
Symmetry **EXCELLENT**  
Fluorescence **NONE**  
Inscription(s) **LG655454152**

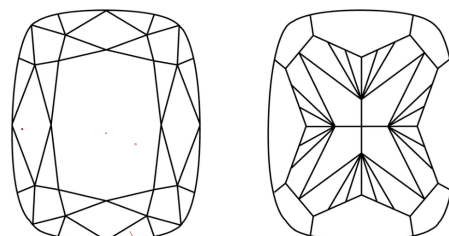
Comments: This Laboratory Grown Diamond was created by Chemical Vapor Deposition (CVD) growth process.

**PROPORTIONS**



Sample Image Used

**CLARITY CHARACTERISTICS**



**KEY TO SYMBOLS**

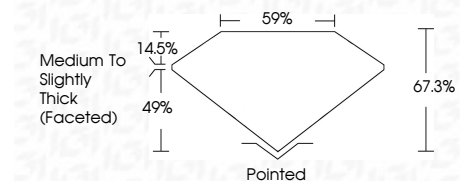
Red symbols indicate internal characteristics.  
Green symbols indicate external characteristics.

**COLOR**

D E F G H I J Faint Very Light Light

**CLARITY**

IF	VS <sup>1-2</sup>	VS <sup>1-2</sup>	SI <sup>1-2</sup>	I <sup>1-3</sup>
Internally Flawless	Very Very Slightly Included	Very Slightly Included	Slightly Included	Included



**ADDITIONAL GRADING INFORMATION**

Polish **EXCELLENT**  
Symmetry **EXCELLENT**  
Fluorescence **NONE**  
Inscription(s) **LG655454152**  
Comments: This Laboratory Grown Diamond was created by Chemical Vapor Deposition (CVD) growth process.



**IGI**



October 9, 2024  
IGI Report No **LG655454152**  
**CUSHION BRILLIANT**  
**3.06 CARATS**  
Carat Weight **FANCY INTENSE YELLOW**  
Color Grade **VVS 2**  
Clarity Grade **67.3%**  
Depth **49%**  
Table **Medium to Slightly Thick (Faceted)**  
Girdle **Pointed**  
Culet **EXCELLENT**  
Polish **EXCELLENT**  
Symmetry **NONE**  
Fluorescence **NONE**  
Inscription(s) **LG655454152**

Comments: This Laboratory Grown Diamond was created by Chemical Vapor Deposition (CVD) growth process.