



ELECTRONIC COPY

LG655454161
Report verification at igi.org



October 10, 2024
IGI Report Number LG655454161
Description LABORATORY GROWN DIAMOND
Shape and Cutting Style ROUND BRILLIANT
Measurements 8.08 - 8.11 X 4.94 MM
GRADING RESULTS
Carat Weight 2.00 CARATS
Color Grade FANCY LIGHT YELLOW
Clarity Grade VS 1
Cut Grade IDEAL

October 10, 2024
IGI Report Number LG655454161
Description LABORATORY GROWN DIAMOND
Shape and Cutting Style ROUND BRILLIANT
Measurements 8.08 - 8.11 X 4.94 MM

GRADING RESULTS

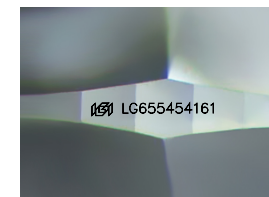
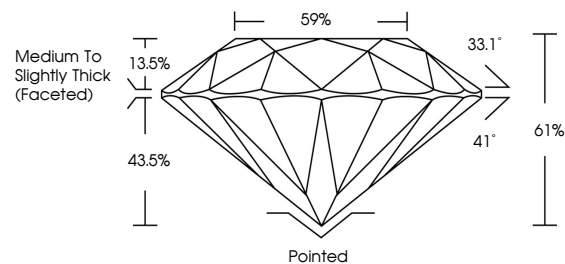
Carat Weight 2.00 CARATS
Color Grade FANCY LIGHT YELLOW
Clarity Grade VS 1
Cut Grade IDEAL

ADDITIONAL GRADING INFORMATION

Polish EXCELLENT
Symmetry EXCELLENT
Fluorescence NONE
Inscription(s) IGI LG655454161

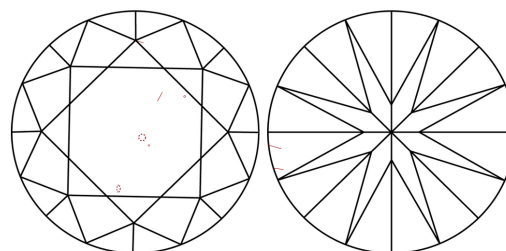
Comments: This Laboratory Grown Diamond was created by Chemical Vapor Deposition (CVD) growth process.

PROPORTIONS



Sample Image Used

CLARITY CHARACTERISTICS



KEY TO SYMBOLS

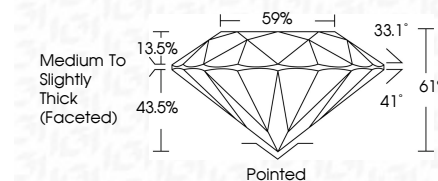
Red symbols indicate internal characteristics.
Green symbols indicate external characteristics.

COLOR

D E F G H I J Faint Very Light Light

CLARITY

IF VS 1-2 VS 1-2 SI 1-2 I 1-3
Internally Flawless Very Very Slightly Included Very Slightly Included Slightly Included Included



ADDITIONAL GRADING INFORMATION

Polish EXCELLENT
Symmetry EXCELLENT
Fluorescence NONE
Inscription(s) IGI LG655454161
Comments: This Laboratory Grown Diamond was created by Chemical Vapor Deposition (CVD) growth process.



Vertical summary of report details including date, report number, measurements, grading results, and additional information.