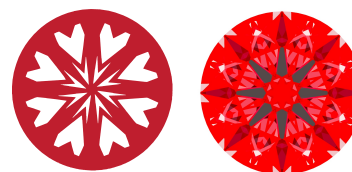




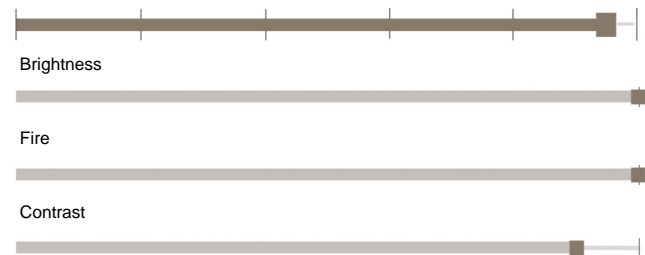
Light Performance Grade: Exceptional



Ideal-Scope representation

Low Moderate High Superior Exceptional

Light Performance



COLOR

D E F G H I J Faint Very Light Light

CLARITY

Table with 5 columns: IF, VS 1-2, VS 1-2, SI 1-2, I 1-3 and 5 rows: Internally Flawless, Very Very Slightly Included, Very Slightly Included, Slightly Included, Included

ELECTRONIC COPY

LABORATORY GROWN DIAMOND REPORT

October 2, 2024 IGI Report Number LG655459749 Description LABORATORY GROWN DIAMOND Shape and Cutting Style ROUND BRILLIANT Measurements 6.51 - 6.56 x 4.03 mm

GRADING RESULTS

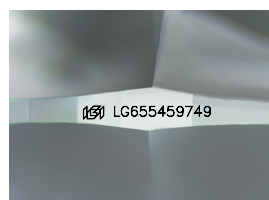
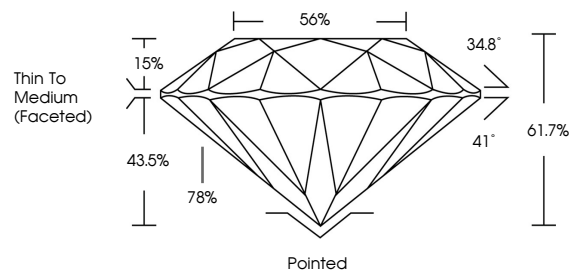
Carat Weight 1.05 CARAT Color Grade D Clarity Grade VVS 2 Cut Grade IDEAL

ADDITIONAL GRADING INFORMATION

Polish EXCELLENT Symmetry EXCELLENT Fluorescence NONE Inscription(s) IGI LG655459749

Comments: HEARTS & ARROWS As Grown - No indication of post-growth treatment. This Laboratory Grown Diamond was created by High Pressure High Temperature (HPHT) growth process. Type II

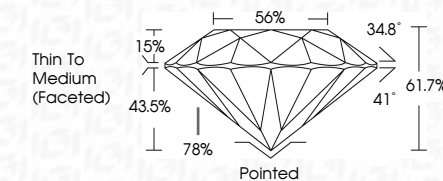
PROPORTIONS



Sample Image Used



October 2, 2024 IGI Report Number LG655459749 Description LABORATORY GROWN DIAMOND Shape and Cutting Style ROUND BRILLIANT Measurements 6.51 - 6.56 X 4.03 MM GRADING RESULTS Carat Weight 1.05 CARAT Color Grade D Clarity Grade VVS 2 Cut Grade IDEAL



ADDITIONAL GRADING INFORMATION

Polish EXCELLENT Symmetry EXCELLENT Fluorescence NONE Inscription(s) IGI LG655459749

Comments: HEARTS & ARROWS As Grown - No indication of post-growth treatment. This Laboratory Grown Diamond was created by High Pressure High Temperature (HPHT) growth process. Type II



IGI



October 2, 2024 IGI Report No LG655459749 ROUND BRILLIANT 6.51 - 6.56 X 4.03 MM 1.05 CARAT D VVS 2 IDEAL 61.7% 56% Thin To Medium (Faceted) Pointed EXCELLENT EXCELLENT NONE IGI LG655459749 Comments: HEARTS & ARROWS As Grown - No indication of post-growth treatment. This Laboratory Grown Diamond was created by High Pressure High Temperature (HPHT) growth process.