



**ELECTRONIC COPY**

LG655459920  
Report verification at igi.org



October 4, 2024

IGI Report Number **LG655459920**

Description **LABORATORY GROWN DIAMOND**

Shape and Cutting Style **PRINCESS CUT**

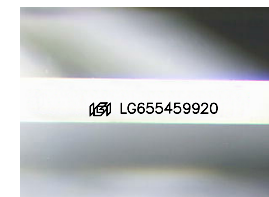
Measurements **6.30 X 6.27 X 4.43 MM**

**GRADING RESULTS**

Carat Weight **1.54 CARAT**

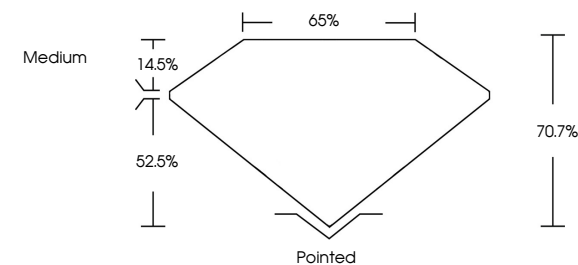
Color Grade **E**

Clarity Grade **VVS 2**

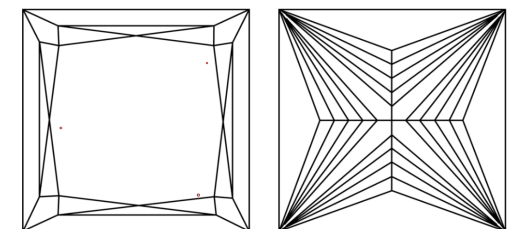


Sample Image Used

**PROPORTIONS**



**CLARITY CHARACTERISTICS**



**KEY TO SYMBOLS**

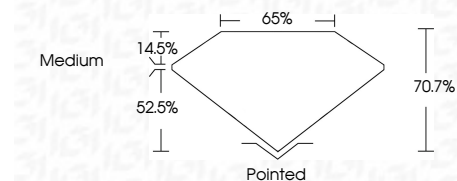
Red symbols indicate internal characteristics.  
Green symbols indicate external characteristics.

**COLOR**

D	E	F	G	H	I	J	Faint	Very Light	Light
---	---	---	---	---	---	---	-------	------------	-------

**CLARITY**

IF	VS <sup>1-2</sup>	VS <sup>1-2</sup>	SI <sup>1-2</sup>	I <sup>1-3</sup>
Internally Flawless	Very Very Slightly Included	Very Slightly Included	Slightly Included	Included



**ADDITIONAL GRADING INFORMATION**

Polish **EXCELLENT**

Symmetry **VERY GOOD**

Fluorescence **NONE**

Inscription(s) **IGI LG655459920**

Comments: This Laboratory Grown Diamond was created by Chemical Vapor Deposition (CVD) growth process.  
Type IIa



**IGI**



October 4, 2024  
IGI Report No LG655459920  
PRINCESS CUT

6.30 X 6.27 X 4.43 MM

1.54 CARAT  
E

Color Grade  
VVS 2

Depth  
70.7%

Table  
65%

Girdle  
Medium

Culet  
Pointed

Polish  
EXCELLENT

Symmetry  
VERY GOOD

Fluorescence  
NONE

Inscription(s)  
IGI LG655459920

Comments: This Laboratory Grown Diamond was created by Chemical Vapor Deposition (CVD) growth process.  
Type IIa