



ELECTRONIC COPY

LG655462809
Report verification at igi.org



October 3, 2024

IGI Report Number **LG655462809**

Description **LABORATORY GROWN DIAMOND**

Shape and Cutting Style **CUT CORNERED
RECTANGULAR MODIFIED
BRILLIANT**

Measurements **16.19 X 10.53 X 6.65 MM**

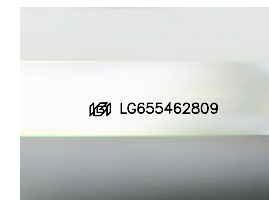
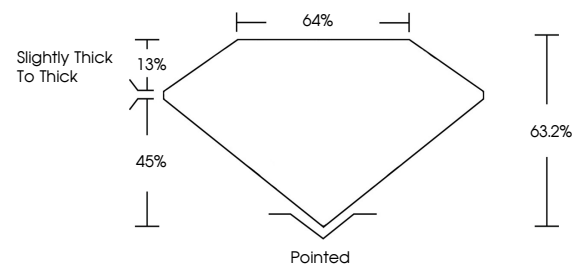
GRADING RESULTS

Carat Weight **10.03 CARATS**

Color Grade **E**

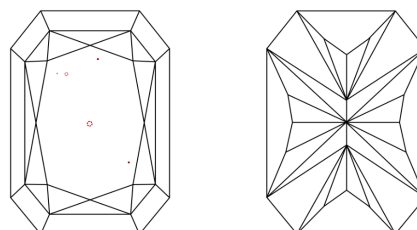
Clarity Grade **VVS 2**

PROPORTIONS



Sample Image Used

CLARITY CHARACTERISTICS



KEY TO SYMBOLS

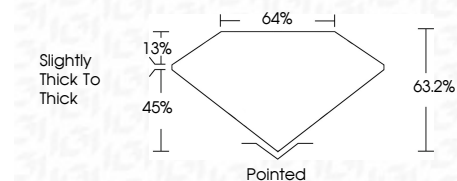
Red symbols indicate internal characteristics.
Green symbols indicate external characteristics.

COLOR

D E F G H I J Faint Very Light Light

CLARITY

IF	VS ¹⁻²	VS ¹⁻²	SI ¹⁻²	I ¹⁻³
Internally Flawless	Very Very Slightly Included	Very Slightly Included	Slightly Included	Included



ADDITIONAL GRADING INFORMATION

Polish **EXCELLENT**

Symmetry **EXCELLENT**

Fluorescence **NONE**

Inscription(s) **IGI LG655462809**

Comments: This Laboratory Grown Diamond was created by Chemical Vapor Deposition (CVD) growth process. Type IIa



IGI



October 3, 2024
IGI Report No LG655462809
CUT CORNERED RECT. MODIFIED BRILLIANT
16.19 X 10.53 X 6.65 MM
10.03 CARATS
E
VVS 2
63.2%
45%
13%
Slightly Thick To Thick
Pointed
EXCELLENT
EXCELLENT
NONE
IGI LG655462809
Comments: This Laboratory Grown Diamond was created by Chemical Vapor Deposition (CVD) growth process. Type IIa