



ELECTRONIC COPY

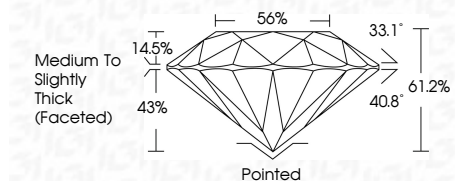
LG656400715
Report verification at igi.org



October 5, 2024
IGI Report Number LG656400715
Description LABORATORY GROWN DIAMOND
Shape and Cutting Style ROUND BRILLIANT
Measurements 6.43 - 6.48 X 3.95 MM

GRADING RESULTS

Carat Weight 1.01 CARAT
Color Grade E
Clarity Grade VVS 2
Cut Grade IDEAL



ADDITIONAL GRADING INFORMATION

Polish EXCELLENT
Symmetry EXCELLENT
Fluorescence NONE
Inscription(s) IGI LG656400715
Comments: This Laboratory Grown Diamond was created by Chemical Vapor Deposition (CVD) growth process. Type IIa



October 5, 2024
IGI Report No LG656400715
ROUND BRILLIANT
6.43 - 6.48 X 3.95 MM
1.01 CARAT E
VVS 2 IDEAL
61.2% 56%
Medium To Slightly Thick (Faceted)
Pointed EXCELLENT EXCELLENT NONE
None IGI LG656400715
Comments: This Laboratory Grown Diamond was created by Chemical Vapor Deposition (CVD) growth process. Type IIa

October 5, 2024
IGI Report Number LG656400715
Description LABORATORY GROWN DIAMOND
Shape and Cutting Style ROUND BRILLIANT
Measurements 6.43 - 6.48 X 3.95 MM

GRADING RESULTS

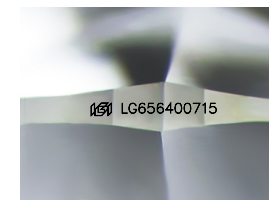
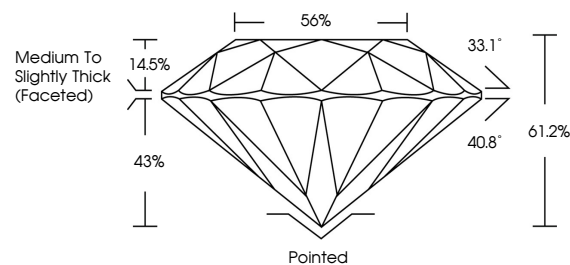
Carat Weight 1.01 CARAT
Color Grade E
Clarity Grade VVS 2
Cut Grade IDEAL

ADDITIONAL GRADING INFORMATION

Polish EXCELLENT
Symmetry EXCELLENT
Fluorescence NONE
Inscription(s) IGI LG656400715

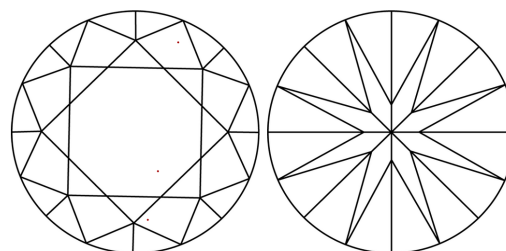
Comments: This Laboratory Grown Diamond was created by Chemical Vapor Deposition (CVD) growth process. Type IIa

PROPORTIONS



Sample Image Used

CLARITY CHARACTERISTICS



KEY TO SYMBOLS

Red symbols indicate internal characteristics.
Green symbols indicate external characteristics.

COLOR

D E F G H I J Faint Very Light Light

CLARITY

Table with columns for clarity grades: IF, VVS 1-2, VS 1-2, SI 1-2, I 1-3 and their corresponding descriptions: Internally Flawless, Very Very Slightly Included, Very Slightly Included, Slightly Included, Included

