



ELECTRONIC COPY

LABORATORY GROWN DIAMOND REPORT

October 3, 2024
IGI Report Number LG656400763
Description LABORATORY GROWN DIAMOND
Shape and Cutting Style CUT CORNERED RECTANGULAR MODIFIED BRILLIANT
Measurements 8.91 X 6.47 X 4.31 MM

GRADING RESULTS

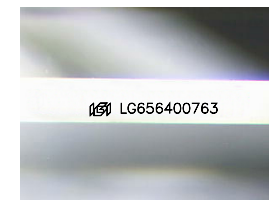
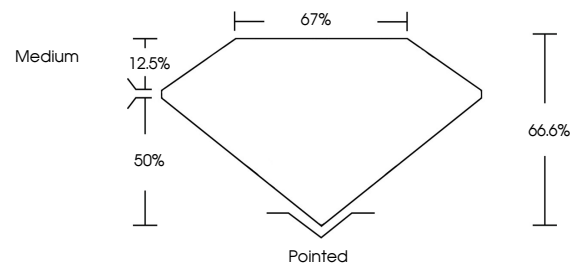
Carat Weight 2.10 CARATS
Color Grade E
Clarity Grade VVS 2

ADDITIONAL GRADING INFORMATION

Polish EXCELLENT
Symmetry EXCELLENT
Fluorescence NONE
Inscription(s) LG656400763

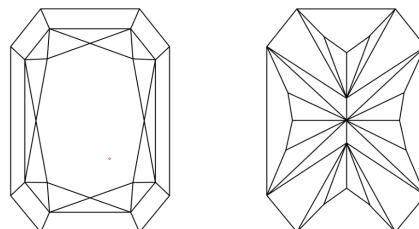
Comments: This Laboratory Grown Diamond was created by Chemical Vapor Deposition (CVD) growth process. Type IIa

PROPORTIONS



Sample Image Used

CLARITY CHARACTERISTICS



KEY TO SYMBOLS

Red symbols indicate internal characteristics. Green symbols indicate external characteristics.

COLOR

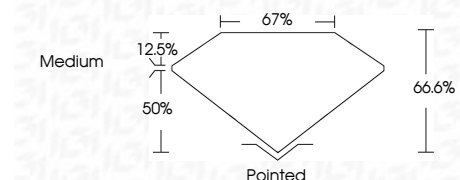
D E F G H I J Faint Very Light Light

CLARITY

Table mapping clarity grades (IF, VVS 1-2, VS 1-2, SI 1-2, I 1-3) to their descriptions (Internally Flawless, Very Very Slightly Included, Very Slightly Included, Slightly Included, Included).



October 3, 2024
IGI Report Number LG656400763
Description LABORATORY GROWN DIAMOND
Shape and Cutting Style CUT CORNERED RECTANGULAR MODIFIED BRILLIANT
Measurements 8.91 X 6.47 X 4.31 MM
GRADING RESULTS
Carat Weight 2.10 CARATS
Color Grade E
Clarity Grade VVS 2



ADDITIONAL GRADING INFORMATION

Polish EXCELLENT
Symmetry EXCELLENT
Fluorescence NONE
Inscription(s) LG656400763
Comments: This Laboratory Grown Diamond was created by Chemical Vapor Deposition (CVD) growth process. Type IIa



October 3, 2024
IGI Report No LG656400763
CUT CORNERED RECT. MODIFIED BRILLIANT
8.91 X 6.47 X 4.31 MM
2.10 CARATS
E
VVS 2
66.6%
67%
Medium
Pointed
EXCELLENT
EXCELLENT
NONE
LG656400763
Comments: This Laboratory Grown Diamond was created by Chemical Vapor Deposition (CVD) growth process. Type IIa