

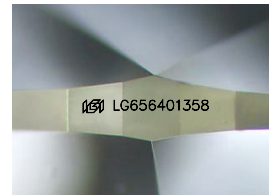
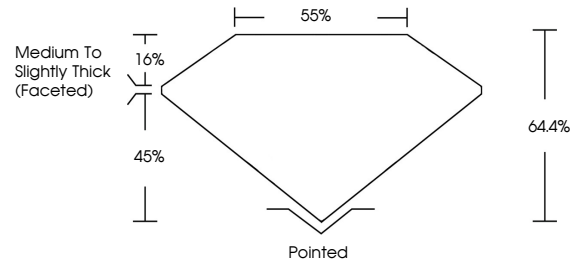


**INTERNATIONAL
GEMOLOGICAL
INSTITUTE**

ELECTRONIC COPY

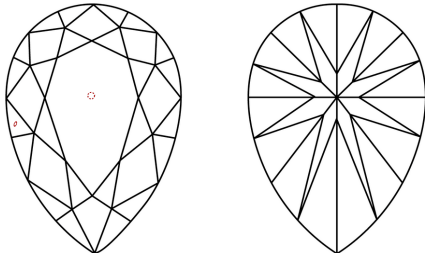
LG656401358
Report verification at igi.org

PROPORTIONS



Sample Image Used

CLARITY CHARACTERISTICS



KEY TO SYMBOLS

Red symbols indicate internal characteristics.
Green symbols indicate external characteristics.

COLOR



CLARITY



© IGI 2020, International Gemological Institute

FD - 10 20

www.igi.org

LABORATORY GROWN DIAMOND REPORT



October 4, 2024

IGI Report Number **LG656401358**

Description	LABORATORY GROWN DIAMOND
-------------	--------------------------

Shape and Cutting Style **PEAR BRILLIANT**

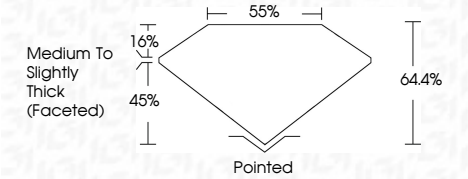
Measurements 10.33 X 6.85 X 4.41 MM

GRADING RESULTS

Carat Weight **1.84 CARAT**

Color Grade H

Clarity Grade VS 1



ADDITIONAL GRADING INFORMATION

Polish **EXCELLENT**Symmetry **EXCELLENT**Fluorescence **NONE**Inscription(s) LG656401358

Comments: This Laboratory Grown Diamond was created by Chemical Vapor Deposition (CVD) growth process.
Type IIa



IGI

October 4, 2024	10.93 X 6.96 X 4.41 MM	1.94 CARAT	
IGI Report No. IGG56401398	Carat Weight	H	
PEARL BRILLIANT	Color Grade	Vs1	64%
	Clarity Grade	64%	59%
	Depth	Medium to Slightly Thick (Faceted)	
	Table	Ported	
	Girdle	EXCELLENT	
	Culet	EXCELLENT	
	Polish	NONE	
	Symmetry		
	Fluorescence		
	Inscription(s)		IGI 109116565401398
	Comments: This Laboratory Grown Diamond was created by Chemical Vapor Deposition (CVD) growth process. Type IId		

This Laboratory Grown Diamond was created by Chemical Vapor Deposition (CVD) growth process.
Type IIa