



ELECTRONIC COPY

LG656402009
Report verification at igi.org



October 6, 2024

IGI Report Number **LG656402009**

Description **LABORATORY GROWN DIAMOND**

Shape and Cutting Style **EMERALD CUT**

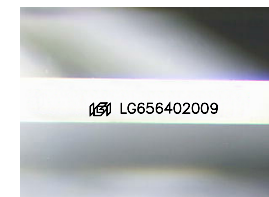
Measurements **8.36 X 6.06 X 4.14 MM**

GRADING RESULTS

Carat Weight **2.05 CARATS**

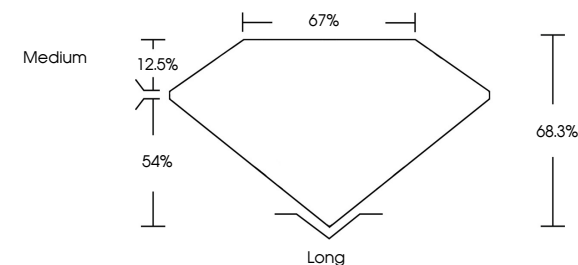
Color Grade **E**

Clarity Grade **VS 1**

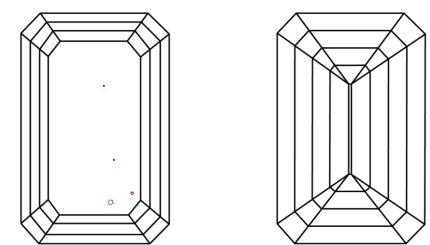


Sample Image Used

PROPORTIONS



CLARITY CHARACTERISTICS



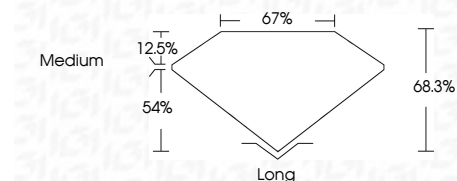
KEY TO SYMBOLS
Red symbols indicate internal characteristics.
Green symbols indicate external characteristics.

COLOR

D	E	F	G	H	I	J	Faint	Very Light	Light
---	---	---	---	---	---	---	-------	------------	-------

CLARITY

IF	VS ¹⁻²	VS ¹⁻²	SI ¹⁻²	I ¹⁻³
Internally Flawless	Very Very Slightly Included	Very Slightly Included	Slightly Included	Included



ADDITIONAL GRADING INFORMATION

Polish **EXCELLENT**

Symmetry **EXCELLENT**

Fluorescence **NONE**

Inscription(s) **IGI LG656402009**

Comments: This Laboratory Grown Diamond was created by Chemical Vapor Deposition (CVD) growth process.
Type IIa



October 6, 2024
IGI Report No. **LG656402009**
EMERALD CUT

2.05 CARATS
E

8.36 X 6.06 X 4.14 MM

Carat Weight
Color Grade
Clarity Grade
Depth
Table
Girdle
Medium

Long
EXCELLENT
EXCELLENT
NONE
IGI LG656402009

Comments: This Laboratory Grown Diamond was created by Chemical Vapor Deposition (CVD) growth process.
Type IIa