



**ELECTRONIC COPY**

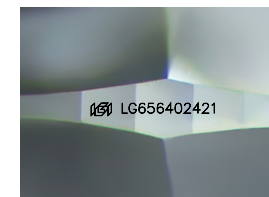
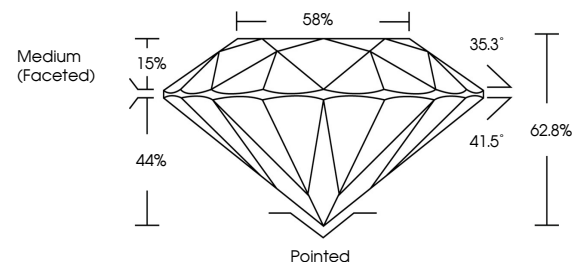
LG656402421  
Report verification at igi.org



October 4, 2024  
IGI Report Number **LG656402421**  
Description **LABORATORY GROWN DIAMOND**  
Shape and Cutting Style **ROUND BRILLIANT**  
Measurements **6.89 - 6.93 X 4.33 MM**  
**GRADING RESULTS**  
Carat Weight **1.27 CARAT**  
Color Grade **E**  
Clarity Grade **VS 2**  
Cut Grade **EXCELLENT**

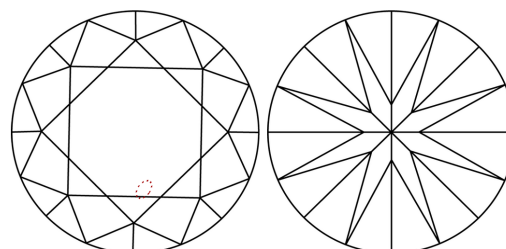
October 4, 2024  
IGI Report Number **LG656402421**  
Description **LABORATORY GROWN DIAMOND**  
Shape and Cutting Style **ROUND BRILLIANT**  
Measurements **6.89 - 6.93 X 4.33 MM**

**PROPORTIONS**



Sample Image Used

**CLARITY CHARACTERISTICS**



**KEY TO SYMBOLS**

Red symbols indicate internal characteristics.  
Green symbols indicate external characteristics.

**GRADING RESULTS**

Carat Weight **1.27 CARAT**  
Color Grade **E**  
Clarity Grade **VS 2**  
Cut Grade **EXCELLENT**

**ADDITIONAL GRADING INFORMATION**

Polish **EXCELLENT**  
Symmetry **EXCELLENT**  
Fluorescence **NONE**  
Inscription(s) **IGI LG656402421**

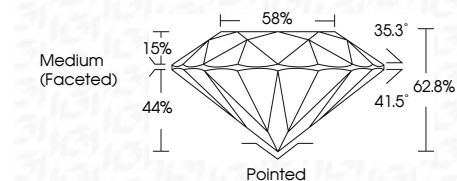
Comments: This Laboratory Grown Diamond was created by Chemical Vapor Deposition (CVD) growth process.  
Type IIa

**COLOR**

D E F G H I J Faint Very Light Light

**CLARITY**

IF	VS <sup>1-2</sup>	VS <sup>1-2</sup>	SI <sup>1-2</sup>	I <sup>1-3</sup>
Internally Flawless	Very Very Slightly Included	Very Slightly Included	Slightly Included	Included



**ADDITIONAL GRADING INFORMATION**

Polish **EXCELLENT**  
Symmetry **EXCELLENT**  
Fluorescence **NONE**  
Inscription(s) **IGI LG656402421**  
Comments: This Laboratory Grown Diamond was created by Chemical Vapor Deposition (CVD) growth process.  
Type IIa



**IGI**



October 4, 2024  
IGI Report No **LG656402421**  
**ROUND BRILLIANT**  
6.89 - 6.93 X 4.33 MM  
1.27 CARAT  
Color Grade **E**  
Clarity Grade **VS 2**  
Depth **62.8%**  
Table **58%**  
Girdle **Medium (Faceted)**  
Culet **Pointed**  
Polish **EXCELLENT**  
Symmetry **EXCELLENT**  
Fluorescence **NONE**  
Inscriptions(s) **IGI LG656402421**  
Comments: This Laboratory Grown Diamond was created by Chemical Vapor Deposition (CVD) growth process.  
Type IIa