



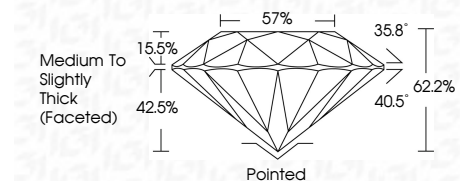
ELECTRONIC COPY

LG656402436 Report verification at igi.org



October 6, 2024 IGI Report Number LG656402436 Description LABORATORY GROWN DIAMOND Shape and Cutting Style ROUND BRILLIANT Measurements 7.37 - 7.43 X 4.60 MM

GRADING RESULTS Carat Weight 1.57 CARAT Color Grade D Clarity Grade VS 1 Cut Grade IDEAL



ADDITIONAL GRADING INFORMATION Polish EXCELLENT Symmetry EXCELLENT Fluorescence NONE Inscription(s) LG656402436 Comments: This Laboratory Grown Diamond was created by Chemical Vapor Deposition (CVD) growth process. Type IIa



October 6, 2024 IGI Report No LG656402436 ROUND BRILLIANT 1.57 CARAT D VS 1 IDEAL 62.2% 57% Medium To Slightly Thick (Faceted) Pointed EXCELLENT EXCELLENT NONE NONE LG656402436

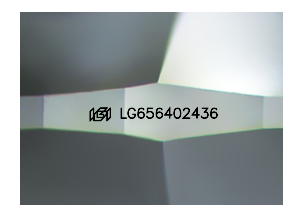
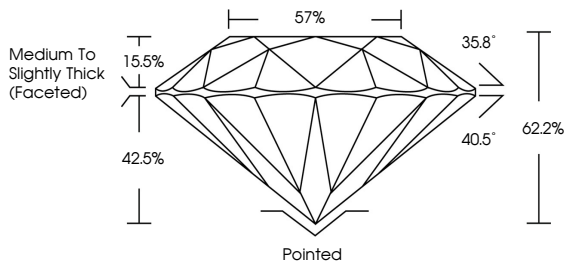
October 6, 2024 IGI Report Number LG656402436 Description LABORATORY GROWN DIAMOND Shape and Cutting Style ROUND BRILLIANT Measurements 7.37 - 7.43 X 4.60 MM

GRADING RESULTS Carat Weight 1.57 CARAT Color Grade D Clarity Grade VS 1 Cut Grade IDEAL

ADDITIONAL GRADING INFORMATION Polish EXCELLENT Symmetry EXCELLENT Fluorescence NONE Inscription(s) LG656402436

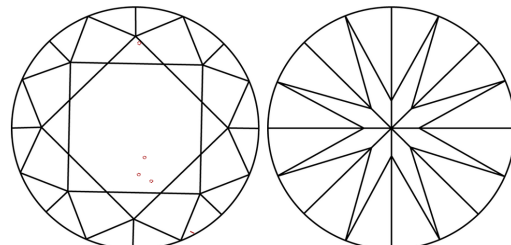
Comments: This Laboratory Grown Diamond was created by Chemical Vapor Deposition (CVD) growth process. Type IIa

PROPORTIONS



Sample Image Used

CLARITY CHARACTERISTICS



KEY TO SYMBOLS Red symbols indicate internal characteristics. Green symbols indicate external characteristics.

Table with 10 columns: D, E, F, G, H, I, J, Faint, Very Light, Light

Table with 5 columns: IF, VS 1-2, VS 1-2, SI 1-2, I 1-3 Internally Flawless, Very Very Slightly Included, Very Slightly Included, Slightly Included, Included



Summary of report details including date, report number, description, measurements, grading results, and additional information.