



ELECTRONIC COPY

LG656407283 Report verification at igi.org



November 26, 2024
IGI Report Number LG656407283
Description LABORATORY GROWN DIAMOND
Shape and Cutting Style CUSHION MODIFIED BRILLIANT
Measurements 10.75 X 8.28 X 5.72 MM
GRADING RESULTS
Carat Weight 4.00 CARATS
Color Grade F
Clarity Grade VVS 1

LABORATORY GROWN DIAMOND REPORT

November 26, 2024
IGI Report Number LG656407283
Description LABORATORY GROWN DIAMOND
Shape and Cutting Style CUSHION MODIFIED BRILLIANT
Measurements 10.75 X 8.28 X 5.72 MM

GRADING RESULTS

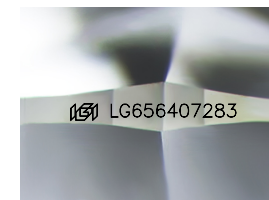
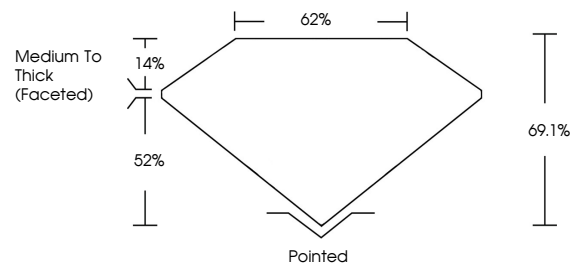
Carat Weight 4.00 CARATS
Color Grade F
Clarity Grade VVS 1

ADDITIONAL GRADING INFORMATION

Polish EXCELLENT
Symmetry EXCELLENT
Fluorescence NONE
Inscription(s) IGI LG656407283

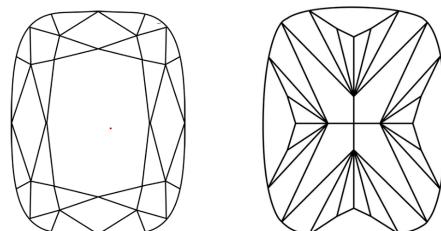
Comments: This Laboratory Grown Diamond was created by Chemical Vapor Deposition (CVD) growth process. Type IIa

PROPORTIONS



Sample Image Used

CLARITY CHARACTERISTICS



KEY TO SYMBOLS

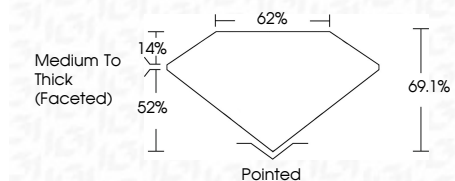
Red symbols indicate internal characteristics. Green symbols indicate external characteristics.

COLOR

D E F G H I J Faint Very Light Light

CLARITY

IF VVS 1-2 VS 1-2 SI 1-2 I 1-3
Internally Flawless Very Very Slightly Included Very Slightly Included Slightly Included Included



ADDITIONAL GRADING INFORMATION

Polish EXCELLENT
Symmetry EXCELLENT
Fluorescence NONE
Inscription(s) IGI LG656407283
Comments: This Laboratory Grown Diamond was created by Chemical Vapor Deposition (CVD) growth process. Type IIa



November 26, 2024
IGI Report No LG656407283
CUSHION MODIFIED BRILLIANT
10.75 X 8.28 X 5.72 MM
4.00 CARATS F
Carat Weight VVS 1
Color Grade 69.1%
Depth 62%
Table Medium To Thick (Faceted)
Girdle Pointed
Culet EXCELLENT
Polish EXCELLENT
Symmetry EXCELLENT
Fluorescence NONE
Inscription(s) IGI LG656407283
Comments: This Laboratory Grown Diamond was created by Chemical Vapor Deposition (CVD) growth process. Type IIa