



ELECTRONIC COPY

LG656413707
Report verification at igi.org



October 11, 2024
IGI Report Number **LG656413707**
Description **LABORATORY GROWN DIAMOND**
Shape and Cutting Style **CUT CORNERED
RECTANGULAR MODIFIED
BRILLIANT**
Measurements **13.57 X 8.86 X 6.09 MM**
GRADING RESULTS
Carat Weight **7.05 CARATS**
Color Grade **FANCY VIVID BROWNISH
YELLOW**
Clarity Grade **VVS 2**

LABORATORY GROWN DIAMOND REPORT

October 11, 2024
IGI Report Number **LG656413707**
Description **LABORATORY GROWN DIAMOND**
Shape and Cutting Style **CUT CORNERED RECTANGULAR
MODIFIED BRILLIANT**
Measurements **13.57 X 8.86 X 6.09 MM**

GRADING RESULTS

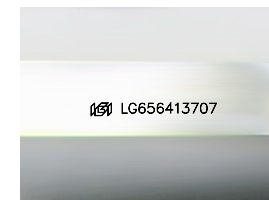
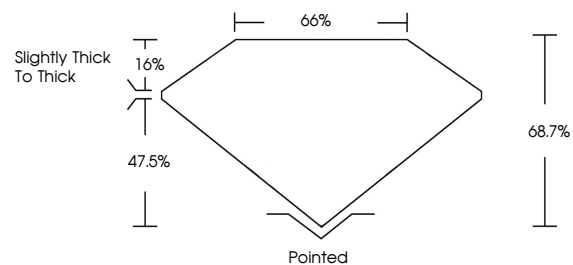
Carat Weight **7.05 CARATS**
Color Grade **FANCY VIVID BROWNISH
YELLOW**
Clarity Grade **VVS 2**

ADDITIONAL GRADING INFORMATION

Polish **EXCELLENT**
Symmetry **EXCELLENT**
Fluorescence **SLIGHT**
Inscription(s) **IGI LG656413707**

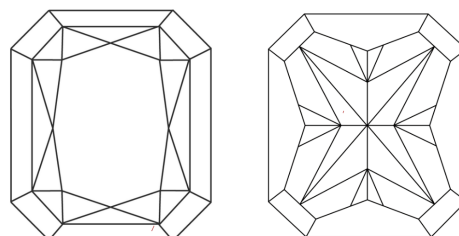
Comments: This Laboratory Grown Diamond was created by Chemical Vapor Deposition (CVD) growth process.
Indications of post-growth treatment.

PROPORTIONS



Sample Image Used

CLARITY CHARACTERISTICS



KEY TO SYMBOLS

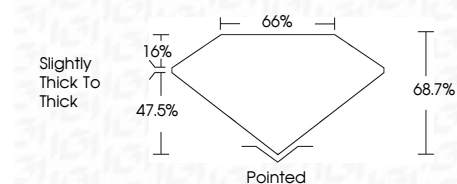
Red symbols indicate internal characteristics.
Green symbols indicate external characteristics.

COLOR

D E F G H I J Faint Very Light Light

CLARITY

IF	VS ¹⁻²	VS ¹⁻²	SI ¹⁻²	I ¹⁻³
Internally Flawless	Very Very Slightly Included	Very Slightly Included	Slightly Included	Included



ADDITIONAL GRADING INFORMATION

Polish **EXCELLENT**
Symmetry **EXCELLENT**
Fluorescence **SLIGHT**
Inscription(s) **IGI LG656413707**
Comments: This Laboratory Grown Diamond was created by Chemical Vapor Deposition (CVD) growth process.
Indications of post-growth treatment.



October 11, 2024
IGI Report No LG656413707
CUT CORNERED RECT. MODIFIED BRILLIANT
13.57 X 8.86 X 6.09 MM
7.05 CARATS
FANCY VIVID BROWNISH YELLOW
VVS 2
68.7%
65%
Slightly thick to thick
Pointed
EXCELLENT
EXCELLENT
SLIGHT
IGI LG656413707

Comments: This Laboratory Grown Diamond was created by Chemical Vapor Deposition (CVD) growth process.
Indications of post-growth treatment.