



**ELECTRONIC COPY**

LG656415149  
Report verification at igi.org



October 8, 2024

IGI Report Number **LG656415149**

Description **LABORATORY GROWN DIAMOND**

Shape and Cutting Style **BAGUETTE**

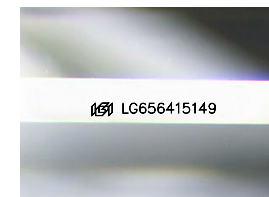
Measurements **13.57 X 7.24 X 5.23 MM**

**GRADING RESULTS**

Carat Weight **5.98 CARATS**

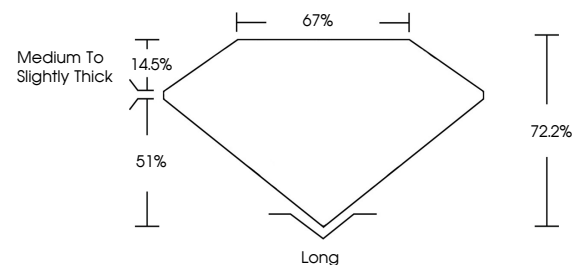
Color Grade **E**

Clarity Grade **VVS 1**

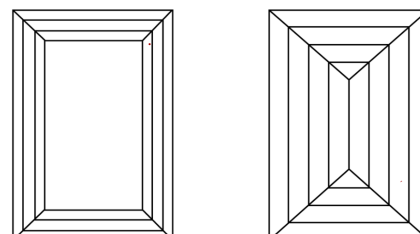


Sample Image Used

**PROPORTIONS**



**CLARITY CHARACTERISTICS**



**KEY TO SYMBOLS**

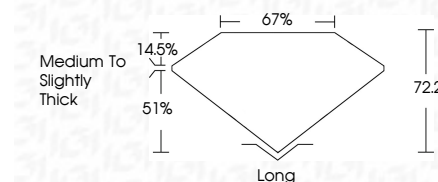
Red symbols indicate internal characteristics.  
Green symbols indicate external characteristics.

**COLOR**

D E F G H I J Faint Very Light Light

**CLARITY**

IF	VS <sup>1-2</sup>	VS <sup>1-2</sup>	SI <sup>1-2</sup>	I <sup>1-3</sup>
Internally Flawless	Very Very Slightly Included	Very Slightly Included	Slightly Included	Included



**ADDITIONAL GRADING INFORMATION**

Polish **EXCELLENT**

Symmetry **EXCELLENT**

Fluorescence **NONE**

Inscription(s) **IGI LG656415149**

Comments: This Laboratory Grown Diamond was created by Chemical Vapor Deposition (CVD) growth process.  
Type IIa



**IGI**

October 8, 2024  
IGI Report No LG656415149  
**BAGUETTE**

**5.98 CARATS**  
Carat Weight  
Color Grade **E**  
Clarity Grade **VVS 1**  
Depth **72.2%**  
Table **67%**  
Girdle **Medium to Slightly Thick**  
Culet **Long**  
Polish **EXCELLENT**  
Symmetry **EXCELLENT**  
Fluorescence **NONE**  
Inscription(s) **IGI LG656415149**

Comments: This Laboratory Grown Diamond was created by Chemical Vapor Deposition (CVD) growth process.  
Type IIa