



ELECTRONIC COPY

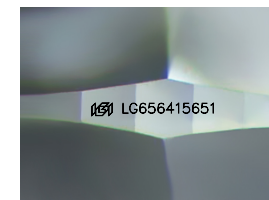
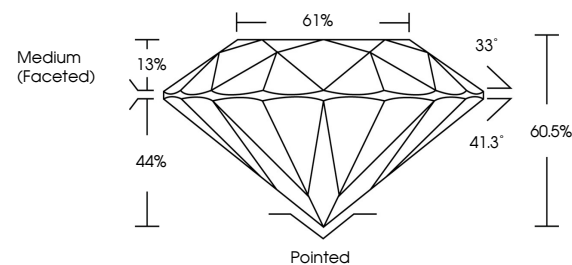
LG656415651
Report verification at igi.org



October 5, 2024
IGI Report Number LG656415651
Description LABORATORY GROWN DIAMOND
Shape and Cutting Style ROUND BRILLIANT
Measurements 8.24 - 8.26 X 4.99 MM
GRADING RESULTS
Carat Weight 2.09 CARATS
Color Grade E
Clarity Grade VVS 2
Cut Grade EXCELLENT

October 5, 2024
IGI Report Number LG656415651
Description LABORATORY GROWN DIAMOND
Shape and Cutting Style ROUND BRILLIANT
Measurements 8.24 - 8.26 X 4.99 MM

PROPORTIONS

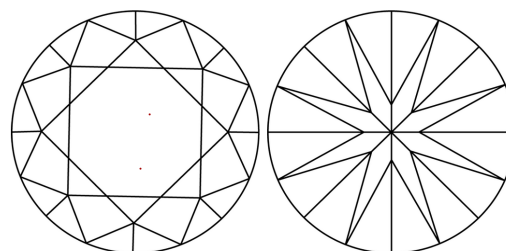


Sample Image Used

GRADING RESULTS

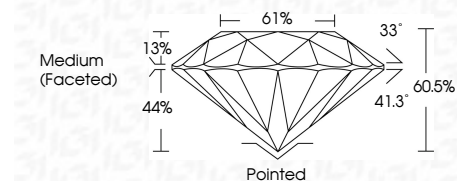
Carat Weight 2.09 CARATS
Color Grade E
Clarity Grade VVS 2
Cut Grade EXCELLENT

CLARITY CHARACTERISTICS



ADDITIONAL GRADING INFORMATION

Polish EXCELLENT
Symmetry EXCELLENT
Fluorescence NONE
Inscription(s) IGI LG656415651



ADDITIONAL GRADING INFORMATION

Polish EXCELLENT
Symmetry EXCELLENT
Fluorescence NONE
Inscription(s) IGI LG656415651
Comments: This Laboratory Grown Diamond was created by Chemical Vapor Deposition (CVD) growth process. Type IIa

COLOR

D E F G H I J Faint Very Light Light

CLARITY

IF VVS 1-2 VS 1-2 SI 1-2 I 1-3
Internally Flawless Very Very Slightly Included Very Slightly Included Slightly Included Included

KEY TO SYMBOLS

Red symbols indicate internal characteristics.
Green symbols indicate external characteristics.



IGI



October 5, 2024
IGI Report No LG656415651
ROUND BRILLIANT
8.24 - 8.26 X 4.99 MM
2.09 CARATS
E
2.09 CARATS
E
VVS 2
EXCELLENT
60.5%
61%
Medium (Faceted)
Pointed
EXCELLENT
EXCELLENT
NONE
IGI LG656415651
Comments: This Laboratory Grown Diamond was created by Chemical Vapor Deposition (CVD) growth process. Type IIa