



ELECTRONIC COPY

LG656477352
Report verification at igi.org



October 10, 2024
IGI Report Number **LG656477352**
Description **LABORATORY GROWN DIAMOND**
Shape and Cutting Style **CUT CORNERED
RECTANGULAR MIXED CUT**
Measurements **8.45 X 6.07 X 4.16 MM**
GRADING RESULTS
Carat Weight **2.05 CARATS**
Color Grade **FANCY YELLOW**
Clarity Grade **VVS 2**

LABORATORY GROWN DIAMOND REPORT

October 10, 2024
IGI Report Number **LG656477352**
Description **LABORATORY GROWN DIAMOND**
Shape and Cutting Style **CUT CORNERED RECTANGULAR
MIXED CUT**
Measurements **8.45 X 6.07 X 4.16 MM**

GRADING RESULTS

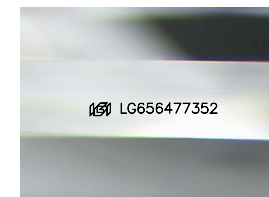
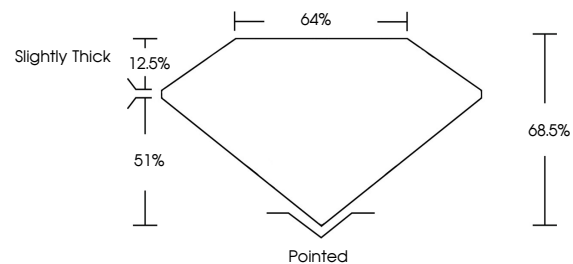
Carat Weight **2.05 CARATS**
Color Grade **FANCY YELLOW**
Clarity Grade **VVS 2**

ADDITIONAL GRADING INFORMATION

Polish **EXCELLENT**
Symmetry **EXCELLENT**
Fluorescence **NONE**
Inscription(s) **IGI LG656477352**

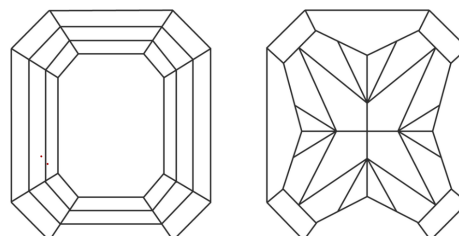
Comments: This Laboratory Grown Diamond was created by Chemical Vapor Deposition (CVD) growth process.

PROPORTIONS



Sample Image Used

CLARITY CHARACTERISTICS



KEY TO SYMBOLS

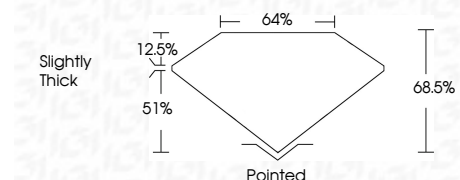
Red symbols indicate internal characteristics.
Green symbols indicate external characteristics.

COLOR

D E F G H I J Faint Very Light Light

CLARITY

IF	VS ¹⁻²	VS ¹⁻²	SI ¹⁻²	I ¹⁻³
Internally Flawless	Very Very Slightly Included	Very Slightly Included	Slightly Included	Included



ADDITIONAL GRADING INFORMATION

Polish **EXCELLENT**
Symmetry **EXCELLENT**
Fluorescence **NONE**
Inscription(s) **IGI LG656477352**
Comments: This Laboratory Grown Diamond was created by Chemical Vapor Deposition (CVD) growth process.



IGI

October 10, 2024
IGI Report No. LG656477352
CUT CORNERED RECT. MIXED CUT
8.45 X 6.07 X 4.16 MM
2.05 CARATS
FANCY YELLOW
VVS 2
68.5%
51%
Slightly Thick
Pointed
EXCELLENT
EXCELLENT
NONE
IGI LG656477352
Comments: This Laboratory Grown Diamond was created by Chemical Vapor Deposition (CVD) growth process.