



ELECTRONIC COPY

LG656477357
Report verification at igi.org



October 10, 2024

IGI Report Number LG656477357

Description LABORATORY GROWN DIAMOND

Shape and Cutting Style CUT CORNERED RECTANGULAR MODIFIED BRILLIANT

Measurements 8.26 X 5.92 X 4.24 MM

GRADING RESULTS

Carat Weight 2.03 CARATS

Color Grade FANCY INTENSE YELLOW

Clarity Grade VS 1

October 10, 2024

IGI Report Number LG656477357

Description LABORATORY GROWN DIAMOND

Shape and Cutting Style CUT CORNERED RECTANGULAR MODIFIED BRILLIANT

Measurements 8.26 X 5.92 X 4.24 MM

GRADING RESULTS

Carat Weight 2.03 CARATS

Color Grade FANCY INTENSE YELLOW

Clarity Grade VS 1

ADDITIONAL GRADING INFORMATION

Polish EXCELLENT

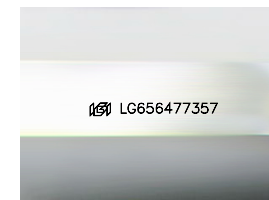
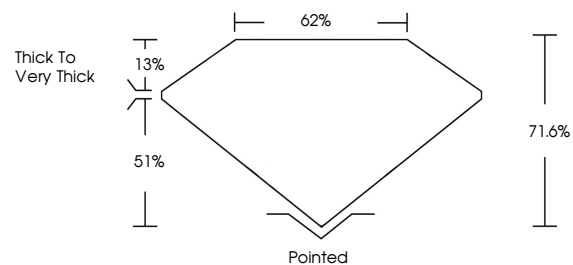
Symmetry EXCELLENT

Fluorescence NONE

Inscription(s) LG656477357

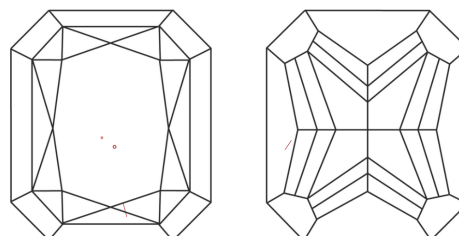
Comments: This Laboratory Grown Diamond was created by Chemical Vapor Deposition (CVD) growth process.

PROPORTIONS



Sample Image Used

CLARITY CHARACTERISTICS



KEY TO SYMBOLS

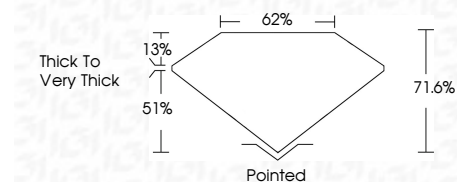
Red symbols indicate internal characteristics. Green symbols indicate external characteristics.

COLOR

D E F G H I J Faint Very Light Light

CLARITY

Table mapping clarity grades (IF, VVS, VS, SI, I) to their descriptions (Internally Flawless, Very Very Slightly Included, etc.)



ADDITIONAL GRADING INFORMATION

Polish EXCELLENT

Symmetry EXCELLENT

Fluorescence NONE

Inscription(s) LG656477357

Comments: This Laboratory Grown Diamond was created by Chemical Vapor Deposition (CVD) growth process.



IGI



Summary of report details including date, report number, description, measurements, grading results, and additional information.