



ELECTRONIC COPY

LG656477807 Report verification at igi.org

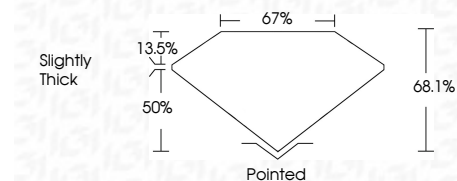


October 3, 2024 IGI Report Number LG656477807 Description LABORATORY GROWN DIAMOND Shape and Cutting Style CUT CORNERED RECTANGULAR MODIFIED BRILLIANT

Measurements 9.05 X 6.64 X 4.52 MM

GRADING RESULTS

Carat Weight 2.43 CARATS Color Grade D Clarity Grade VS 1



ADDITIONAL GRADING INFORMATION

Polish EXCELLENT Symmetry EXCELLENT Fluorescence NONE Inscription(s) LG656477807 Comments: This Laboratory Grown Diamond was created by Chemical Vapor Deposition (CVD) growth process. Type IIa



October 3, 2024 IGI Report No LG656477807 CUT CORNERED RECT. MODIFIED BRILLIANT 9.05 X 6.64 X 4.52 MM 2.43 CARATS D VS 1 68.1% 50% 13.5% Slightly Thick Pointed EXCELLENT EXCELLENT NONE NONE LG656477807

Comments: This Laboratory Grown Diamond was created by Chemical Vapor Deposition (CVD) growth process. Type IIa

LABORATORY GROWN DIAMOND REPORT

October 3, 2024 IGI Report Number LG656477807 Description LABORATORY GROWN DIAMOND Shape and Cutting Style CUT CORNERED RECTANGULAR MODIFIED BRILLIANT Measurements 9.05 X 6.64 X 4.52 MM

GRADING RESULTS

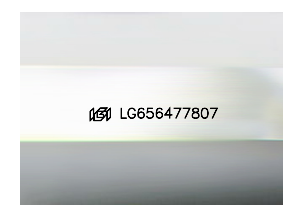
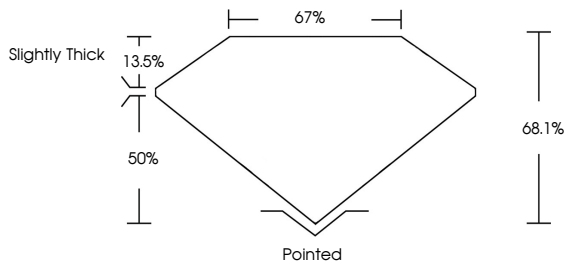
Carat Weight 2.43 CARATS Color Grade D Clarity Grade VS 1

ADDITIONAL GRADING INFORMATION

Polish EXCELLENT Symmetry EXCELLENT Fluorescence NONE Inscription(s) LG656477807

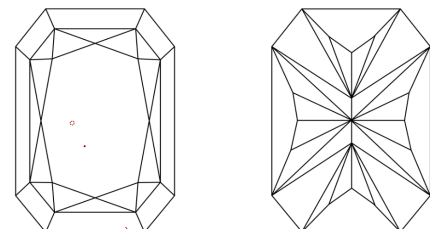
Comments: This Laboratory Grown Diamond was created by Chemical Vapor Deposition (CVD) growth process. Type IIa

PROPORTIONS



Sample Image Used

CLARITY CHARACTERISTICS



KEY TO SYMBOLS

Red symbols indicate internal characteristics. Green symbols indicate external characteristics.

COLOR

D E F G H I J Faint Very Light Light

CLARITY

IF WVS 1-2 VS 1-2 SI 1-2 I 1-3 Internally Flawless Very Very Slightly Included Very Slightly Included Slightly Included Included

