



ELECTRONIC COPY

LG656477850
Report verification at igi.org



October 3, 2024
IGI Report Number LG656477850
Description LABORATORY GROWN DIAMOND
Shape and Cutting Style CUT CORNERED RECTANGULAR MODIFIED BRILLIANT
Measurements 9.29 X 6.30 X 4.27 MM
GRADING RESULTS
Carat Weight 2.17 CARATS
Color Grade G
Clarity Grade VS 1

LABORATORY GROWN DIAMOND REPORT

October 3, 2024
IGI Report Number LG656477850
Description LABORATORY GROWN DIAMOND
Shape and Cutting Style CUT CORNERED RECTANGULAR MODIFIED BRILLIANT
Measurements 9.29 X 6.30 X 4.27 MM

GRADING RESULTS

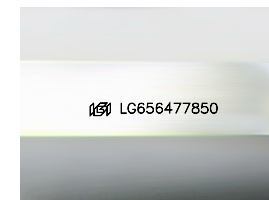
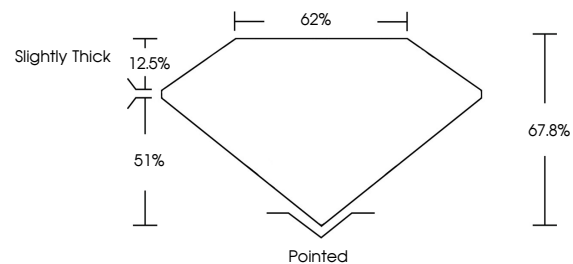
Carat Weight 2.17 CARATS
Color Grade G
Clarity Grade VS 1

ADDITIONAL GRADING INFORMATION

Polish EXCELLENT
Symmetry EXCELLENT
Fluorescence NONE
Inscription(s) LG656477850

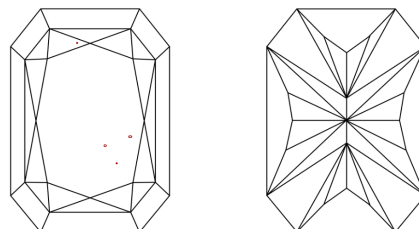
Comments: This Laboratory Grown Diamond was created by Chemical Vapor Deposition (CVD) growth process. Type IIa

PROPORTIONS



Sample Image Used

CLARITY CHARACTERISTICS



KEY TO SYMBOLS

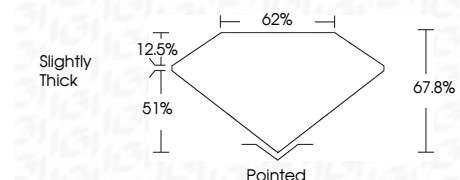
Red symbols indicate internal characteristics.
Green symbols indicate external characteristics.

COLOR

D E F G H I J Faint Very Light Light

CLARITY

IF VS 1-2 VS 1-2 SI 1-2 I 1-3
Internally Flawless Very Very Slightly Included Very Slightly Included Slightly Included Included



ADDITIONAL GRADING INFORMATION

Polish EXCELLENT
Symmetry EXCELLENT
Fluorescence NONE
Inscription(s) LG656477850
Comments: This Laboratory Grown Diamond was created by Chemical Vapor Deposition (CVD) growth process. Type IIa



October 3, 2024
IGI Report No LG656477850
CUT CORNERED RECT. MODIFIED BRILLIANT
9.29 X 6.30 X 4.27 MM
2.17 CARATS
G
2.17 CARATS
G
VS 1
67.0%
62%
Slightly Thick
Pointed
EXCELLENT
EXCELLENT
NONE
NONE
Inscription(s) LG656477850
Comments: This Laboratory Grown Diamond was created by Chemical Vapor Deposition (CVD) growth process. Type IIa