



ELECTRONIC COPY

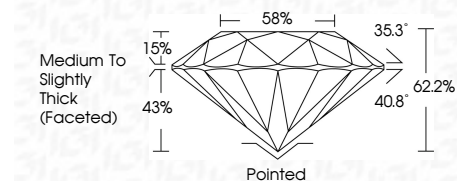
LG656478101
Report verification at igi.org



October 3, 2024
IGI Report Number **LG656478101**
Description **LABORATORY GROWN DIAMOND**
Shape and Cutting Style **ROUND BRILLIANT**
Measurements **9.16 - 9.23 X 5.71 MM**

GRADING RESULTS

Carat Weight **3.01 CARATS**
Color Grade **E**
Clarity Grade **VS 2**
Cut Grade **IDEAL**



ADDITIONAL GRADING INFORMATION

Polish **EXCELLENT**
Symmetry **EXCELLENT**
Fluorescence **NONE**
Inscription(s) **IGI LG656478101**
Comments: This Laboratory Grown Diamond was created by Chemical Vapor Deposition (CVD) growth process. Type IIa



October 3, 2024
IGI Report No **LG656478101**
ROUND BRILLIANT
9.16 - 9.23 X 5.71 MM
3.01 CARATS
E
VS 2
IDEAL
62.2%
58%
Medium To Slightly Thick (Faceted)
Pointed
EXCELLENT
EXCELLENT
NONE
IGI LG656478101
Inscription(s)
Comments: This Laboratory Grown Diamond was created by Chemical Vapor Deposition (CVD) growth process. Type IIa

October 3, 2024
IGI Report Number **LG656478101**
Description **LABORATORY GROWN DIAMOND**
Shape and Cutting Style **ROUND BRILLIANT**
Measurements **9.16 - 9.23 X 5.71 MM**

GRADING RESULTS

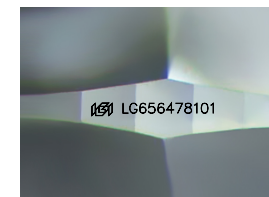
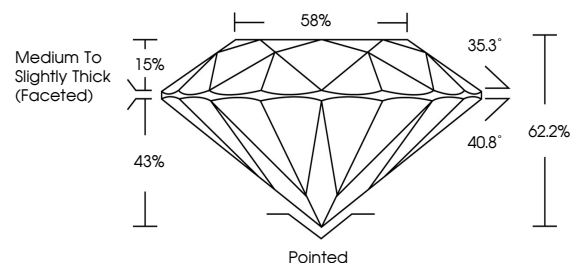
Carat Weight **3.01 CARATS**
Color Grade **E**
Clarity Grade **VS 2**
Cut Grade **IDEAL**

ADDITIONAL GRADING INFORMATION

Polish **EXCELLENT**
Symmetry **EXCELLENT**
Fluorescence **NONE**
Inscription(s) **IGI LG656478101**

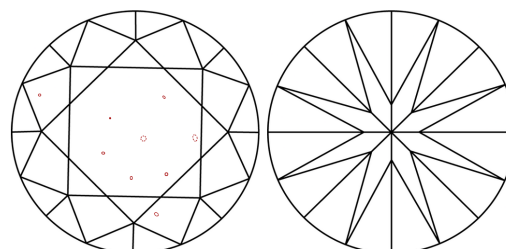
Comments: This Laboratory Grown Diamond was created by Chemical Vapor Deposition (CVD) growth process. Type IIa

PROPORTIONS



Sample Image Used

CLARITY CHARACTERISTICS



KEY TO SYMBOLS

Red symbols indicate internal characteristics.
Green symbols indicate external characteristics.

COLOR

D E F G H I J Faint Very Light Light

CLARITY

IF	VS ¹⁻²	VS ¹⁻²	SI ¹⁻²	I ¹⁻³
Internally Flawless	Very Very Slightly Included	Very Slightly Included	Slightly Included	Included

