



**ELECTRONIC COPY**

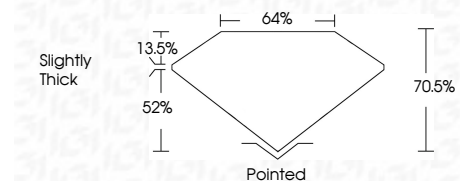
LG656479373  
Report verification at igi.org



October 8, 2024  
IGI Report Number **LG656479373**  
Description **LABORATORY GROWN DIAMOND**  
Shape and Cutting Style **CUT CORNERED  
RECTANGULAR MODIFIED  
BRILLIANT**  
Measurements **9.35 X 6.62 X 4.67 MM**

**GRADING RESULTS**

Carat Weight **2.58 CARATS**  
Color Grade **FANCY VIVID PINK**  
Clarity Grade **VS 1**



**ADDITIONAL GRADING INFORMATION**

Polish **EXCELLENT**  
Symmetry **EXCELLENT**  
Fluorescence **SLIGHT**  
Inscription(s) **IGI LG656479373**  
Comments: This Laboratory Grown Diamond was created by Chemical Vapor Deposition (CVD) growth process. Indications of post-growth treatment.  
Secondary color: Orange



October 8, 2024  
IGI Report No **LG656479373**  
**CUT CORNERED RECT. MODIFIED BRILLIANT**  
**9.35 X 6.62 X 4.67 MM**  
**2.58 CARATS**  
**FANCY VIVID PINK**  
**VS 1**  
**70.5%**  
**13.5%**  
**52%**  
**Slightly Thick**  
**Pointed**  
**EXCELLENT**  
**EXCELLENT**  
**SLIGHT**  
**IGI LG656479373**

Comments: This Laboratory Grown Diamond was created by Chemical Vapor Deposition (CVD) growth process. Indications of post-growth treatment. Secondary color: Orange

**LABORATORY GROWN DIAMOND REPORT**

October 8, 2024  
IGI Report Number **LG656479373**  
Description **LABORATORY GROWN DIAMOND**  
Shape and Cutting Style **CUT CORNERED RECTANGULAR  
MODIFIED BRILLIANT**  
Measurements **9.35 X 6.62 X 4.67 MM**

**GRADING RESULTS**

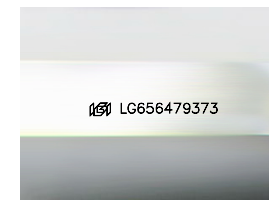
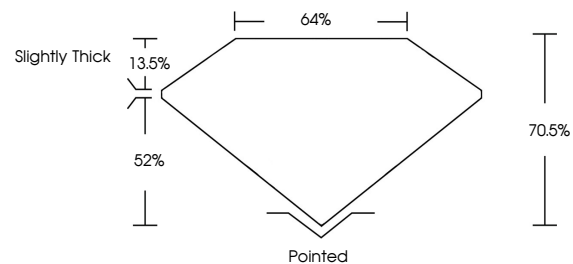
Carat Weight **2.58 CARATS**  
Color Grade **FANCY VIVID PINK**  
Clarity Grade **VS 1**

**ADDITIONAL GRADING INFORMATION**

Polish **EXCELLENT**  
Symmetry **EXCELLENT**  
Fluorescence **SLIGHT**  
Inscription(s) **IGI LG656479373**

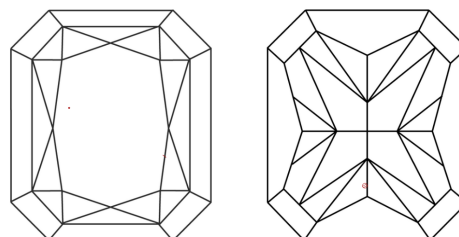
Comments: This Laboratory Grown Diamond was created by Chemical Vapor Deposition (CVD) growth process. Indications of post-growth treatment.  
Secondary color: Orange

**PROPORTIONS**



Sample Image Used

**CLARITY CHARACTERISTICS**



**KEY TO SYMBOLS**

Red symbols indicate internal characteristics.  
Green symbols indicate external characteristics.

**COLOR**

D E F G H I J Faint Very Light Light

**CLARITY**

IF	VS <sup>1-2</sup>	VS <sup>1-2</sup>	SI <sup>1-2</sup>	I <sup>1-3</sup>
Internally Flawless	Very Very Slightly Included	Very Slightly Included	Slightly Included	Included