



ELECTRONIC COPY

LG656479375
Report verification at igi.org



October 7, 2024
IGI Report Number: LG656479375
Description: LABORATORY GROWN DIAMOND
Shape and Cutting Style: CUT CORNERED RECTANGULAR MODIFIED BRILLIANT
Measurements: 9.19 X 6.63 X 4.60 MM
GRADING RESULTS
Carat Weight: 2.53 CARATS
Color Grade: FANCY VIVID PINK
Clarity Grade: VS 1

LABORATORY GROWN DIAMOND REPORT

October 7, 2024
IGI Report Number: LG656479375
Description: LABORATORY GROWN DIAMOND
Shape and Cutting Style: CUT CORNERED RECTANGULAR MODIFIED BRILLIANT
Measurements: 9.19 X 6.63 X 4.60 MM

GRADING RESULTS

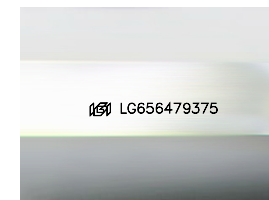
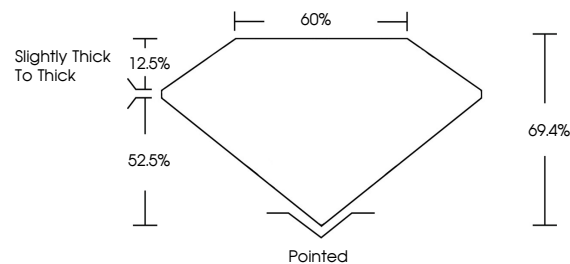
Carat Weight: 2.53 CARATS
Color Grade: FANCY VIVID PINK
Clarity Grade: VS 1

ADDITIONAL GRADING INFORMATION

Polish: EXCELLENT
Symmetry: EXCELLENT
Fluorescence: SLIGHT
Inscription(s): IGI LG656479375

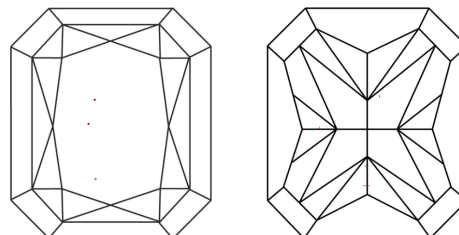
Comments: This Laboratory Grown Diamond was created by Chemical Vapor Deposition (CVD) growth process.
Indications of post-growth treatment.

PROPORTIONS



Sample Image Used

CLARITY CHARACTERISTICS



KEY TO SYMBOLS

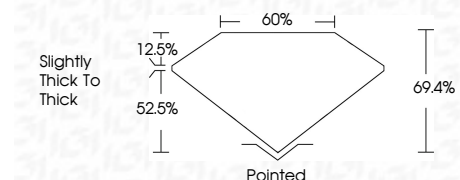
Red symbols indicate internal characteristics.
Green symbols indicate external characteristics.

COLOR

D E F G H I J Faint Very Light Light

CLARITY

Table mapping clarity grades (IF, VVS, VS, SI, I) to descriptions (Internally Flawless, Very Very Slightly Included, etc.)



ADDITIONAL GRADING INFORMATION

Polish: EXCELLENT
Symmetry: EXCELLENT
Fluorescence: SLIGHT
Inscription(s): IGI LG656479375
Comments: This Laboratory Grown Diamond was created by Chemical Vapor Deposition (CVD) growth process.
Indications of post-growth treatment.



October 7, 2024
IGI Report No LG656479375
CUT CORNERED RECT. MODIFIED BRILLIANT
9.19 X 6.63 X 4.60 MM
2.53 CARATS
FANCY VIVID PINK
VS 1
69.4%
52.5%
Slightly Thick To Thick
Pointed
EXCELLENT
EXCELLENT
SLIGHT
IGI LG656479375
Comments: This Laboratory Grown Diamond was created by Chemical Vapor Deposition (CVD) growth process.
Indications of post-growth treatment.