



ELECTRONIC COPY

LG656479379 Report verification at igi.org



October 8, 2024
IGI Report Number: LG656479379
Description: LABORATORY GROWN DIAMOND
Shape and Cutting Style: CUT CORNERED RECTANGULAR MODIFIED BRILLIANT
Measurements: 8.70 X 6.20 X 4.11 MM
GRADING RESULTS
Carat Weight: 2.05 CARATS
Color Grade: FANCY VIVID GREEN
Clarity Grade: VVS 2

LABORATORY GROWN DIAMOND REPORT

October 8, 2024
IGI Report Number: LG656479379
Description: LABORATORY GROWN DIAMOND
Shape and Cutting Style: CUT CORNERED RECTANGULAR MODIFIED BRILLIANT
Measurements: 8.70 X 6.20 X 4.11 MM

GRADING RESULTS

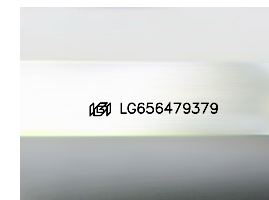
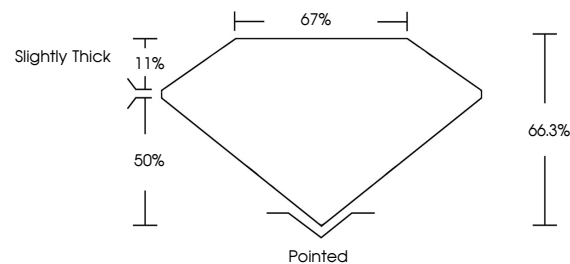
Carat Weight: 2.05 CARATS
Color Grade: FANCY VIVID GREEN
Clarity Grade: VVS 2

ADDITIONAL GRADING INFORMATION

Polish: EXCELLENT
Symmetry: EXCELLENT
Fluorescence: NONE
Inscription(s): IGI LG656479379

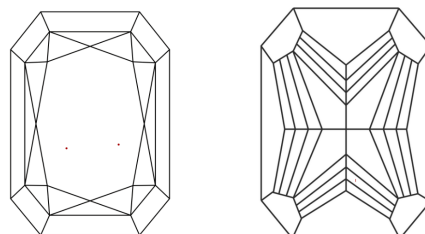
Comments: This Laboratory Grown Diamond was created by Chemical Vapor Deposition (CVD) growth process. Indications of post-growth treatment.

PROPORTIONS



Sample Image Used

CLARITY CHARACTERISTICS



KEY TO SYMBOLS

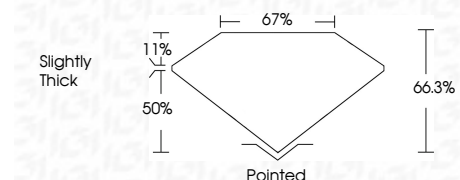
Red symbols indicate internal characteristics. Green symbols indicate external characteristics.

COLOR

D E F G H I J Faint Very Light Light

CLARITY

Table mapping clarity grades (IF, VVS, VS, SI, I) to descriptions (Internally Flawless, Very Very Slightly Included, etc.)



ADDITIONAL GRADING INFORMATION

Polish: EXCELLENT
Symmetry: EXCELLENT
Fluorescence: NONE
Inscription(s): IGI LG656479379
Comments: This Laboratory Grown Diamond was created by Chemical Vapor Deposition (CVD) growth process. Indications of post-growth treatment.



October 8, 2024
IGI Report No: LG656479379
CUT CORNERED RECT. MODIFIED BRILLIANT
8.70 X 6.20 X 4.11 MM
2.05 CARATS
FANCY VIVID GREEN
VVS 2
66.3%
67%
Slightly Thick
Pointed
EXCELLENT
EXCELLENT
NONE
IGI LG656479379
Comments: This Laboratory Grown Diamond was created by Chemical Vapor Deposition (CVD) growth process. Indications of post-growth treatment.