



ELECTRONIC COPY

LG656479567
Report verification at igi.org



October 5, 2024

IGI Report Number **LG656479567**

Description **LABORATORY GROWN DIAMOND**

Shape and Cutting Style **CUT CORNERED
RECTANGULAR MODIFIED
BRILLIANT**

Measurements **8.53 X 5.74 X 3.76 MM**

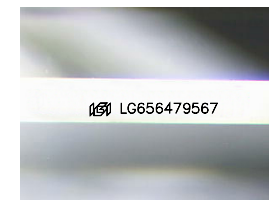
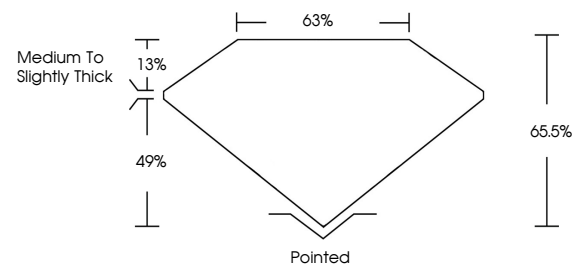
GRADING RESULTS

Carat Weight **1.52 CARAT**

Color Grade **D**

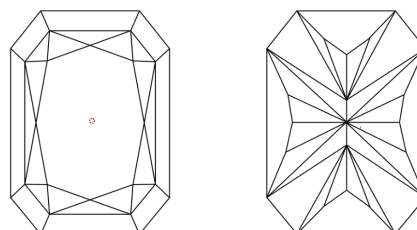
Clarity Grade **VVS 1**

PROPORTIONS



Sample Image Used

CLARITY CHARACTERISTICS



KEY TO SYMBOLS

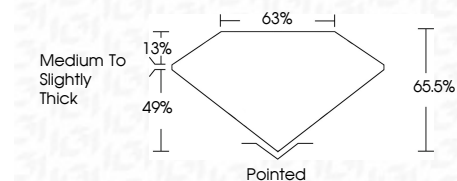
Red symbols indicate internal characteristics.
Green symbols indicate external characteristics.

COLOR

D E F G H I J Faint Very Light Light

CLARITY

IF	VS ¹⁻²	VS ¹⁻²	SI ¹⁻²	I ¹⁻³
Internally Flawless	Very Very Slightly Included	Very Slightly Included	Slightly Included	Included



ADDITIONAL GRADING INFORMATION

Polish **EXCELLENT**

Symmetry **EXCELLENT**

Fluorescence **NONE**

Inscription(s) **IGI LG656479567**

Comments: This Laboratory Grown Diamond was created by Chemical Vapor Deposition (CVD) growth process. Type IIa



IGI



October 5, 2024
IGI Report No LG656479567
CUT CORNERED RECT. MODIFIED BRILLIANT
8.53 X 5.74 X 3.76 MM
Carat Weight 1.52 CARAT
Color Grade D
Clarity Grade VVS 1
Depth 65.5%
Table 63%
Girdle Medium to Slightly Thick
Culet Pointed
Polish EXCELLENT
Symmetry EXCELLENT
Fluorescence NONE
Inscription(s) IGI LG656479567
Comments: This Laboratory Grown Diamond was created by Chemical Vapor Deposition (CVD) growth process. Type IIa