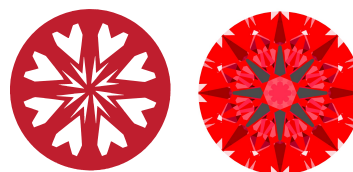




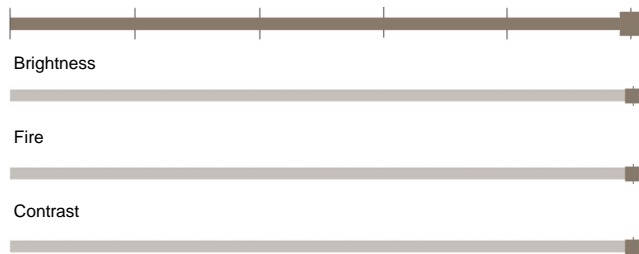
**Light Performance Grade: Exceptional**



**Ideal-Scope representation**

Low Moderate High Superior Exceptional

**Light Performance**



**COLOR**

D E F G H I J Faint Very Light Light

**CLARITY**

IF	VS 1-2	VS 1-2	SI 1-2	I 1-3
Internally Flawless	Very Very Slightly Included	Very Slightly Included	Slightly Included	Included

**ELECTRONIC COPY**

**LABORATORY GROWN DIAMOND REPORT**

October 3, 2024  
 IGI Report Number **LG656480108**  
 Description **LABORATORY GROWN DIAMOND**  
 Shape and Cutting Style **ROUND BRILLIANT**  
 Measurements **6.51 - 6.54 x 3.98 mm**

**GRADING RESULTS**

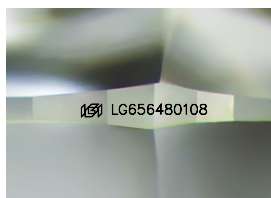
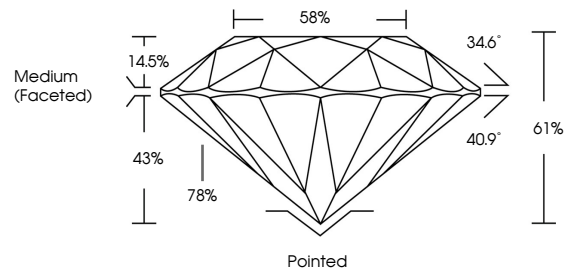
Carat Weight **1.04 CARAT**  
 Color Grade **D**  
 Clarity Grade **VS 2**  
 Cut Grade **IDEAL**

**ADDITIONAL GRADING INFORMATION**

Polish **EXCELLENT**  
 Symmetry **EXCELLENT**  
 Fluorescence **NONE**  
 Inscription(s) **IGI LG656480108**

Comments: HEARTS & ARROWS  
 This Laboratory Grown Diamond was created by  
 Chemical Vapor Deposition (CVD) growth process.  
 Type IIa

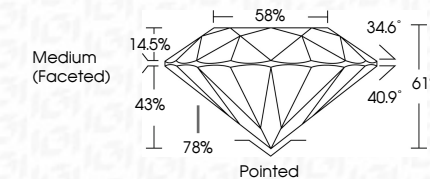
**PROPORTIONS**



Sample Image Used



October 3, 2024  
 IGI Report Number **LG656480108**  
 Description **LABORATORY GROWN DIAMOND**  
 Shape and Cutting Style **ROUND BRILLIANT**  
 Measurements **6.51 - 6.54 X 3.98 MM**  
**GRADING RESULTS**  
 Carat Weight **1.04 CARAT**  
 Color Grade **D**  
 Clarity Grade **VS 2**  
 Cut Grade **IDEAL**



**ADDITIONAL GRADING INFORMATION**

Polish **EXCELLENT**  
 Symmetry **EXCELLENT**  
 Fluorescence **NONE**  
 Inscription(s) **IGI LG656480108**  
 Comments: HEARTS & ARROWS  
 This Laboratory Grown Diamond was created by  
 Chemical Vapor Deposition (CVD) growth process.  
 Type IIa



**IGI**



October 3, 2024	IGI Report No LG656480108	ROUND BRILLIANT	1.04 CARAT	D	VS 2	IDEAL	61%	68%	Medium (Faceted)	Pointed	EXCELLENT	EXCELLENT	NONE	IGI LG656480108
6.51 - 6.54 X 3.98 MM	Carat Weight	Color Grade	Clarity Grade	Cut Grade	Depth	Table	Girdle	Culet	Polish	Symmetry	Fluorescence	Inscription(s)	Comments: HEARTS & ARROWS	This Laboratory Grown Diamond was created by Chemical Vapor Deposition (CVD) growth process. Type IIa