



ELECTRONIC COPY

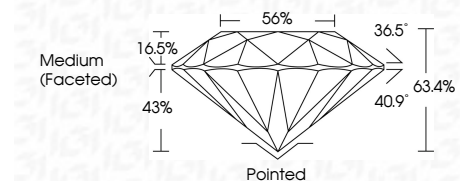
LG656481833
Report verification at igi.org



October 3, 2024
IGI Report Number: LG656481833
Description: LABORATORY GROWN DIAMOND
Shape and Cutting Style: ROUND BRILLIANT
Measurements: 6.66 - 6.69 X 4.23 MM

GRADING RESULTS

Carat Weight: 1.17 CARAT
Color Grade: D
Clarity Grade: VVS 2
Cut Grade: EXCELLENT

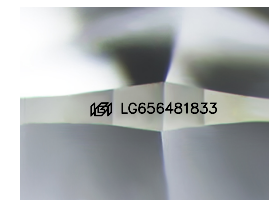


ADDITIONAL GRADING INFORMATION

Polish: EXCELLENT
Symmetry: EXCELLENT
Fluorescence: NONE
Inscription(s): IGI LG656481833
Comments: This Laboratory Grown Diamond was created by Chemical Vapor Deposition (CVD) growth process. Type IIa

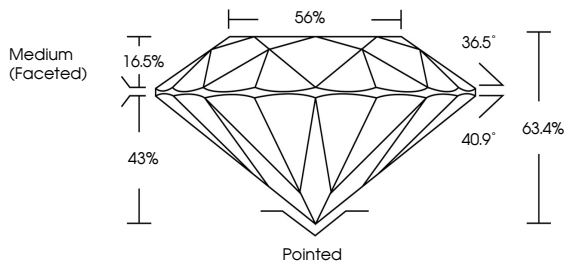


October 3, 2024
IGI Report No LG656481833
ROUND BRILLIANT
6.66 - 6.69 X 4.23 MM
Carat Weight: 1.17 CARAT
Color Grade: D
Clarity Grade: VVS 2
Cut Grade: EXCELLENT
Depth: 63.4%
Table: 56%
Girdle: Medium (Faceted)
Culet: Pointed
Polish: EXCELLENT
Symmetry: EXCELLENT
Fluorescence: NONE
Inscriptions: IGI LG656481833
Comments: This Laboratory Grown Diamond was created by Chemical Vapor Deposition (CVD) growth process. Type IIa

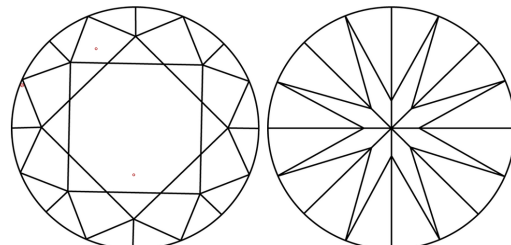


Sample Image Used

PROPORTIONS



CLARITY CHARACTERISTICS



KEY TO SYMBOLS

Red symbols indicate internal characteristics.
Green symbols indicate external characteristics.

COLOR

D E F G H I J Faint Very Light Light

CLARITY

IF VS 1-2 VS 1-2 SI 1-2 I 1-3
Internally Flawless Very Very Slightly Included Very Slightly Included Slightly Included Included

