



ELECTRONIC COPY

LG656486785
Report verification at igi.org



October 9, 2024

IGI Report Number LG656486785

Description LABORATORY GROWN DIAMOND

Shape and Cutting Style PRINCESS CUT

Measurements 6.82 X 6.78 X 4.96 MM

GRADING RESULTS

Carat Weight 2.03 CARATS

Color Grade FANCY VIVID PINK

Clarity Grade VS 1

October 9, 2024
IGI Report Number LG656486785
Description LABORATORY GROWN DIAMOND
Shape and Cutting Style PRINCESS CUT
Measurements 6.82 X 6.78 X 4.96 MM

GRADING RESULTS

Carat Weight 2.03 CARATS

Color Grade FANCY VIVID PINK

Clarity Grade VS 1

ADDITIONAL GRADING INFORMATION

Polish EXCELLENT

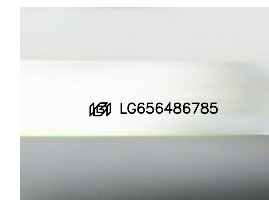
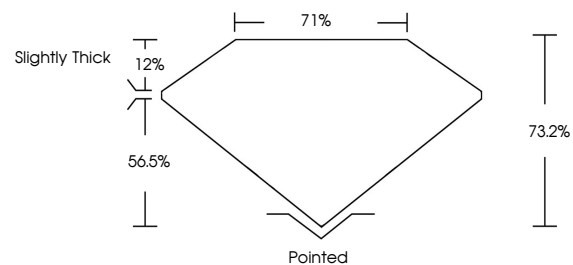
Symmetry VERY GOOD

Fluorescence SLIGHT

Inscription(s) IGI LG656486785

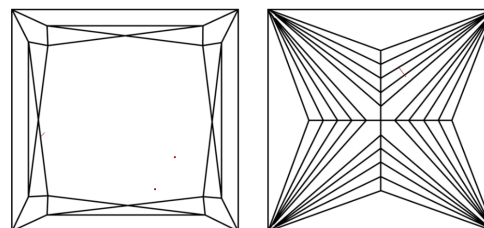
Comments: This Laboratory Grown Diamond was created by Chemical Vapor Deposition (CVD) growth process. Indications of post-growth treatment.

PROPORTIONS



Sample Image Used

CLARITY CHARACTERISTICS



KEY TO SYMBOLS

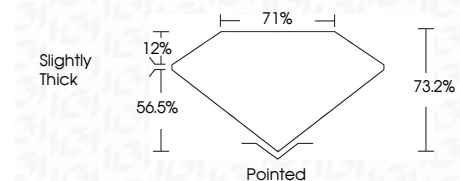
Red symbols indicate internal characteristics. Green symbols indicate external characteristics.

COLOR

D E F G H I J Faint Very Light Light

CLARITY

IF VS 1-2 VS 1-2 SI 1-2 I 1-3
Internally Flawless Very Very Slightly Included Very Slightly Included Slightly Included Included



ADDITIONAL GRADING INFORMATION

Polish EXCELLENT

Symmetry VERY GOOD

Fluorescence SLIGHT

Inscription(s) IGI LG656486785

Comments: This Laboratory Grown Diamond was created by Chemical Vapor Deposition (CVD) growth process. Indications of post-growth treatment.



IGI



Summary of report details including date, report number, description, measurements, grading results, and additional information.

Comments: This Laboratory Grown Diamond was created by Chemical Vapor Deposition (CVD) growth process. Indications of post-growth treatment.