



ELECTRONIC COPY

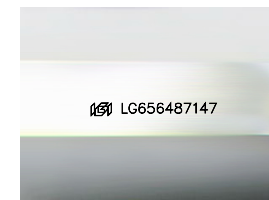
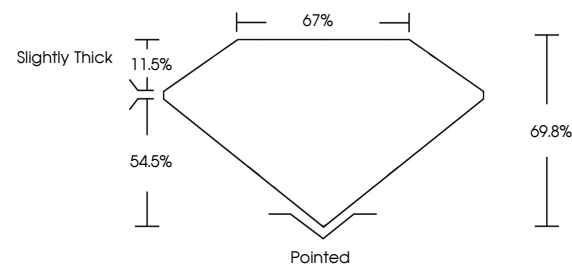
LG656487147  
Report verification at igi.org



October 15, 2024  
IGI Report Number **LG656487147**  
Description **LABORATORY GROWN DIAMOND**  
Shape and Cutting Style **PRINCESS CUT**  
Measurements **8.00 X 7.98 X 5.57 MM**  
**GRADING RESULTS**  
Carat Weight **3.04 CARATS**  
Color Grade **F**  
Clarity Grade **VVS 2**

October 15, 2024  
IGI Report Number **LG656487147**  
Description **LABORATORY GROWN DIAMOND**  
Shape and Cutting Style **PRINCESS CUT**  
Measurements **8.00 X 7.98 X 5.57 MM**

PROPORTIONS

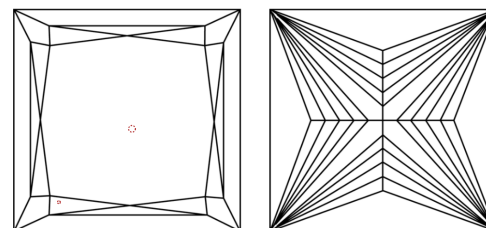


Sample Image Used

GRADING RESULTS

Carat Weight **3.04 CARATS**  
Color Grade **F**  
Clarity Grade **VVS 2**

CLARITY CHARACTERISTICS



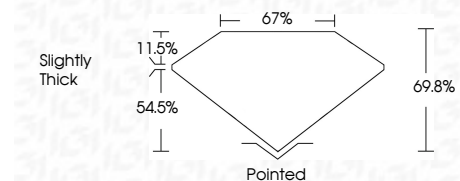
KEY TO SYMBOLS

Red symbols indicate internal characteristics.  
Green symbols indicate external characteristics.

ADDITIONAL GRADING INFORMATION

Polish **EXCELLENT**  
Symmetry **EXCELLENT**  
Fluorescence **NONE**  
Inscription(s) **IGI LG656487147**

Comments: This Laboratory Grown Diamond was created by Chemical Vapor Deposition (CVD) growth process.  
Type IIa



ADDITIONAL GRADING INFORMATION

Polish **EXCELLENT**  
Symmetry **EXCELLENT**  
Fluorescence **NONE**  
Inscription(s) **IGI LG656487147**  
Comments: This Laboratory Grown Diamond was created by Chemical Vapor Deposition (CVD) growth process.  
Type IIa

COLOR

D E F G H I J Faint Very Light Light

CLARITY

IF VS 1-2 VS 1-2 SI 1-2 I 1-3  
Internally Flawless Very Very Slightly Included Very Slightly Included Slightly Included Included



IGI



October 15, 2024  
IGI Report No **LG656487147**  
**PRINCESS CUT**  
**8.00 X 7.98 X 5.57 MM**  
Carat Weight **3.04 CARATS**  
Color Grade **F**  
Clarity Grade **VVS 2**  
Depth **69.8%**  
Table **67%**  
Girdle **Slightly Thick**  
Culet **Pointed**  
Polish **EXCELLENT**  
Symmetry **EXCELLENT**  
Fluorescence **NONE**  
Inscription(s) **IGI LG656487147**  
Comments: This Laboratory Grown Diamond was created by Chemical Vapor Deposition (CVD) growth process.  
Type IIa