

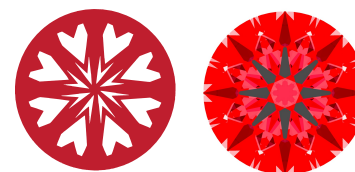


# INTERNATIONAL GEMOLOGICAL INSTITUTE

LG656495668  
Report verification at igi.org

## LIGHT PERFORMANCE REPORT

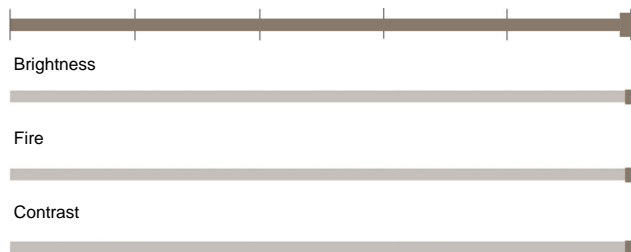
Light Performance Grade: **Exceptional**



Ideal-Scope representation

Low Moderate High Superior Exceptional

### Light Performance



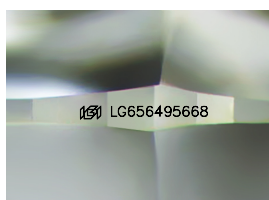
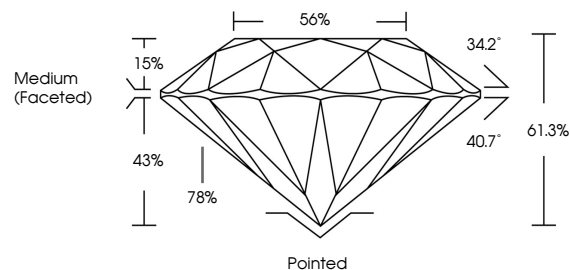
### COLOR

D E F G H I J Faint Very Light Light

### CLARITY

IF	VS <sup>1-2</sup>	VS <sup>1-2</sup>	SI <sup>1-2</sup>	I <sup>1-3</sup>
Internally Flawless	Very Very Slightly Included	Very Slightly Included	Slightly Included	Included

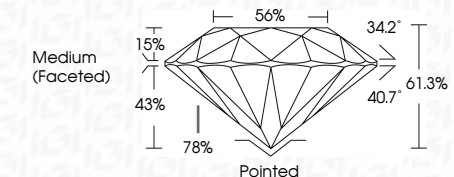
### PROPORTIONS



Sample Image Used



October 4, 2024  
 IGI Report Number **LG656495668**  
 Description **LABORATORY GROWN DIAMOND**  
 Shape and Cutting Style **ROUND BRILLIANT**  
 Measurements **8.18 - 8.20 X 5.02 MM**  
**GRADING RESULTS**  
 Carat Weight **2.05 CARATS**  
 Color Grade **D**  
 Clarity Grade **VS 1**  
 Cut Grade **IDEAL**



### ADDITIONAL GRADING INFORMATION

Polish **EXCELLENT**  
 Symmetry **EXCELLENT**  
 Fluorescence **NONE**  
 Inscription(s) **IGI LG656495668**  
 Comments: HEARTS & ARROWS  
 This Laboratory Grown Diamond was created by Chemical Vapor Deposition (CVD) growth process. Type IIa



# IGI

October 4, 2024  
 IGI Report No LG656495668  
**ROUND BRILLIANT**  
**8.18 - 8.20 X 5.02 MM**  
 Carat Weight **2.05 CARATS**  
 Color Grade **D**  
 Clarity Grade **VS 1**  
 Cut Grade **IDEAL**  
 Depth **61.3%**  
 Table **56%**  
 Girdle **Medium (Faceted)**  
 Culet **Pointed**  
 Polish **EXCELLENT**  
 Symmetry **EXCELLENT**  
 Fluorescence **NONE**  
 Inscription(s) **IGI LG656495668**  
 Comments: HEARTS & ARROWS  
 This Laboratory Grown Diamond was created by Chemical Vapor Deposition (CVD) growth process. Type IIa



**ELECTRONIC COPY**

## LABORATORY GROWN DIAMOND REPORT

October 4, 2024  
 IGI Report Number **LG656495668**  
 Description **LABORATORY GROWN DIAMOND**  
 Shape and Cutting Style **ROUND BRILLIANT**  
 Measurements **8.18 - 8.20 x 5.02 mm**

### GRADING RESULTS

Carat Weight **2.05 CARATS**  
 Color Grade **D**  
 Clarity Grade **VS 1**  
 Cut Grade **IDEAL**

### ADDITIONAL GRADING INFORMATION

Polish **EXCELLENT**  
 Symmetry **EXCELLENT**  
 Fluorescence **NONE**  
 Inscription(s) **IGI LG656495668**

Comments: HEARTS & ARROWS  
 This Laboratory Grown Diamond was created by Chemical Vapor Deposition (CVD) growth process. Type IIa