



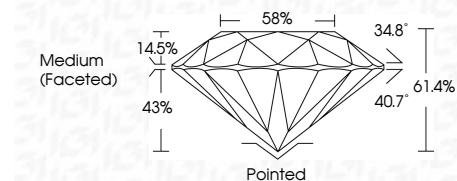
ELECTRONIC COPY

LG656496051
Report verification at igi.org



October 6, 2024
IGI Report Number LG656496051
Description LABORATORY GROWN DIAMOND
Shape and Cutting Style ROUND BRILLIANT
Measurements 8.17 - 8.22 X 5.03 MM

GRADING RESULTS
Carat Weight 2.09 CARATS
Color Grade G
Clarity Grade VS 1
Cut Grade IDEAL

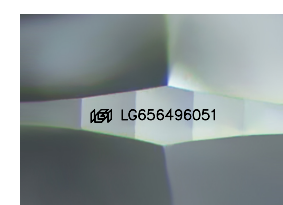
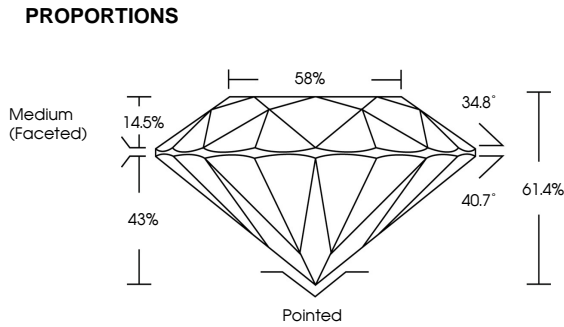


ADDITIONAL GRADING INFORMATION
Polish EXCELLENT
Symmetry EXCELLENT
Fluorescence NONE
Inscription(s) IGI LG656496051
Comments: This Laboratory Grown Diamond was created by Chemical Vapor Deposition (CVD) growth process. Type IIa



October 6, 2024
IGI Report No LG656496051
ROUND BRILLIANT
8.17 - 8.22 X 5.03 MM
2.09 CARATS
Color Grade G
Clarity Grade VS 1
Cut Grade IDEAL
Depth 61.4%
Table 58%
Medium (Faceted)
Pointed
EXCELLENT
EXCELLENT
NONE
IGI LG656496051
Comments: This Laboratory Grown Diamond was created by Chemical Vapor Deposition (CVD) growth process. Type IIa

October 6, 2024
IGI Report Number LG656496051
Description LABORATORY GROWN DIAMOND
Shape and Cutting Style ROUND BRILLIANT
Measurements 8.17 - 8.22 X 5.03 MM
GRADING RESULTS
Carat Weight 2.09 CARATS
Color Grade G
Clarity Grade VS 1
Cut Grade IDEAL



Sample Image Used

Table with 5 columns: D, E, F, G, H, I, J, Faint, Very Light, Light

Table with 5 columns: IF, VS 1-2, VS 1-2, SI 1-2, I 1-3, Internally Flawless, Very Very Slightly Included, Very Slightly Included, Slightly Included, Included

