



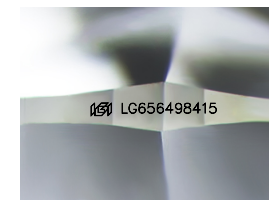
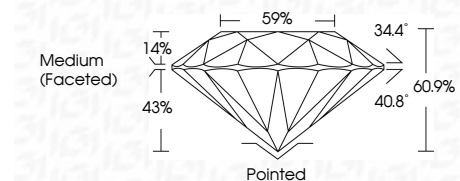
ELECTRONIC COPY

LG656498415
Report verification at igi.org



October 7, 2024
IGI Report Number: LG656498415
Description: LABORATORY GROWN DIAMOND
Shape and Cutting Style: ROUND BRILLIANT
Measurements: 6.56 - 6.61 X 4.01 MM

GRADING RESULTS
Carat Weight: 1.07 CARAT
Color Grade: D
Clarity Grade: VVS 1
Cut Grade: IDEAL



Sample Image Used

ADDITIONAL GRADING INFORMATION
Polish: EXCELLENT
Symmetry: EXCELLENT
Fluorescence: NONE
Inscription(s): IGI LG656498415
Comments: HEARTS & ARROWS
As Grown - No indication of post-growth treatment.
This Laboratory Grown Diamond was created by High Pressure High Temperature (HPHT) growth process.
Type II



October 7, 2024
IGI Report No LG656498415
ROUND BRILLIANT
6.56 - 6.61 X 4.01 MM
1.07 CARAT
D
VVS 1
IDEAL
60.9%
59%
Medium (Faceted)
Pointed
EXCELLENT
EXCELLENT
NONE
IGI LG656498415
Comments: HEARTS & ARROWS
As Grown - No indication of post-growth treatment.
This Laboratory Grown Diamond was created by High Pressure High Temperature (HPHT) growth process.
Type II

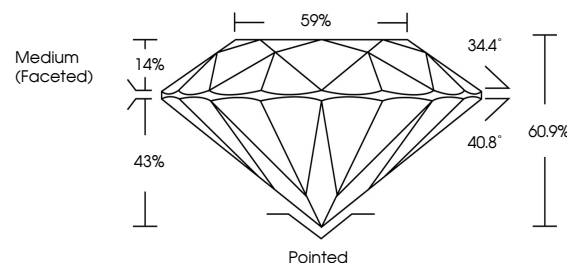
October 7, 2024
IGI Report Number: LG656498415
Description: LABORATORY GROWN DIAMOND
Shape and Cutting Style: ROUND BRILLIANT
Measurements: 6.56 - 6.61 X 4.01 MM

GRADING RESULTS
Carat Weight: 1.07 CARAT
Color Grade: D
Clarity Grade: VVS 1
Cut Grade: IDEAL

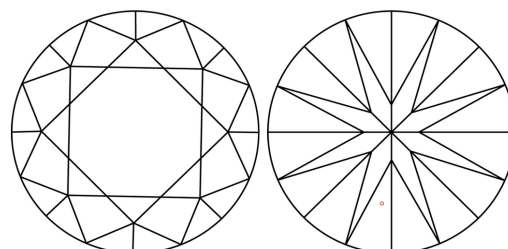
ADDITIONAL GRADING INFORMATION
Polish: EXCELLENT
Symmetry: EXCELLENT
Fluorescence: NONE
Inscription(s): IGI LG656498415

Comments: HEARTS & ARROWS
As Grown - No indication of post-growth treatment.
This Laboratory Grown Diamond was created by High Pressure High Temperature (HPHT) growth process.
Type II

PROPORTIONS

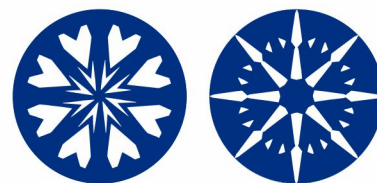


CLARITY CHARACTERISTICS



KEY TO SYMBOLS

Red symbols indicate internal characteristics.
Green symbols indicate external characteristics.



COLOR

D E F G H I J Faint Very Light Light

CLARITY

IF VVS 1-2 VS 1-2 SI 1-2 I 1-3
Internally Flawless Very Very Slightly Included Very Slightly Included Slightly Included Included