



ELECTRONIC COPY

LG656498451
Report verification at igi.org



October 10, 2024

IGI Report Number **LG656498451**

Description **LABORATORY GROWN DIAMOND**

Shape and Cutting Style **ROUND BRILLIANT**

Measurements **7.42 - 7.46 X 4.48 MM**

GRADING RESULTS

Carat Weight **1.51 CARAT**

Color Grade **D**

Clarity Grade **VVS 1**

Cut Grade **IDEAL**

October 10, 2024

IGI Report Number **LG656498451**

Description **LABORATORY GROWN DIAMOND**

Shape and Cutting Style **ROUND BRILLIANT**

Measurements **7.42 - 7.46 X 4.48 MM**

GRADING RESULTS

Carat Weight **1.51 CARAT**

Color Grade **D**

Clarity Grade **VVS 1**

Cut Grade **IDEAL**

ADDITIONAL GRADING INFORMATION

Polish **EXCELLENT**

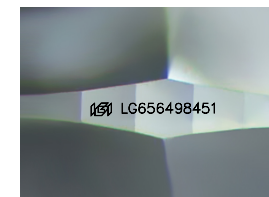
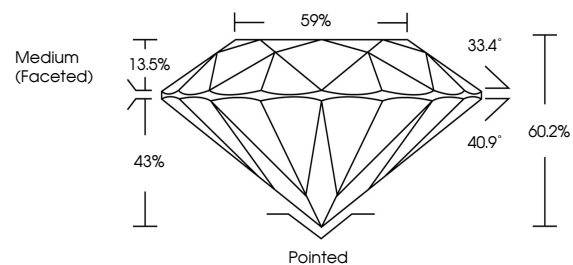
Symmetry **EXCELLENT**

Fluorescence **NONE**

Inscription(s) **LG656498451**

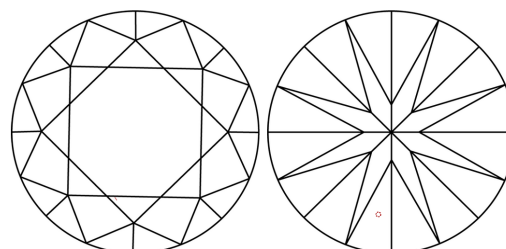
Comments: HEARTS & ARROWS
As Grown - No indication of post-growth treatment.
This Laboratory Grown Diamond was created by High Pressure High Temperature (HPHT) growth process.
Type II

PROPORTIONS



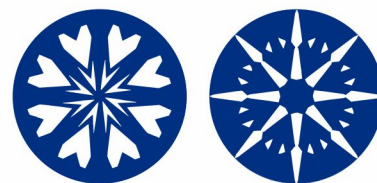
Sample Image Used

CLARITY CHARACTERISTICS



KEY TO SYMBOLS

Red symbols indicate internal characteristics.
Green symbols indicate external characteristics.

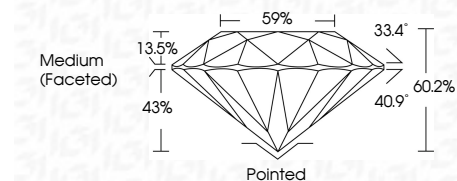


COLOR

D E F G H I J Faint Very Light Light

CLARITY

IF	VVS ¹⁻²	VS ¹⁻²	SI ¹⁻²	I ¹⁻³
Internally Flawless	Very Very Slightly Included	Very Slightly Included	Slightly Included	Included



ADDITIONAL GRADING INFORMATION

Polish **EXCELLENT**

Symmetry **EXCELLENT**

Fluorescence **NONE**

Inscription(s) **LG656498451**

Comments: HEARTS & ARROWS
As Grown - No indication of post-growth treatment.
This Laboratory Grown Diamond was created by High Pressure High Temperature (HPHT) growth process.
Type II



IGI

October 10, 2024	IGI Report No LG656498451	1.51 CARAT	D	Pointed
7.42 - 7.46 X 4.48 MM	ROUND BRILLIANT	Color Grade	VVS 1	EXCELLENT
		Clarity Grade	IDEAL	EXCELLENT
		Depth	60.2%	NONE
		Table	59%	None
		Grille	Medium (Faceted)	None
		Culet		None
		Polish		None
		Symmetry		None
		Fluorescence		None
		Inscriptions(s)		None
		Comments:		None
		HEARTS & ARROWS		None
		As Grown - No indication of post-growth treatment.		None
		This Laboratory Grown Diamond was created by High Pressure High Temperature (HPHT) growth process.		None
		Type II		None