



ELECTRONIC COPY

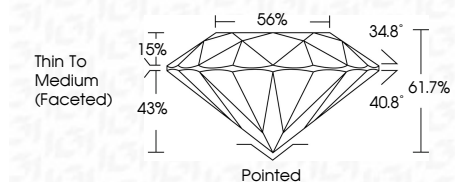
LG656498455
Report verification at igi.org



October 11, 2024
IGI Report Number LG656498455
Description LABORATORY GROWN DIAMOND
Shape and Cutting Style ROUND BRILLIANT
Measurements 8.08 - 8.10 X 4.99 MM

GRADING RESULTS

Carat Weight 2.01 CARATS
Color Grade D
Clarity Grade VVS 2
Cut Grade IDEAL



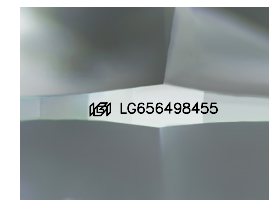
ADDITIONAL GRADING INFORMATION

Polish EXCELLENT
Symmetry EXCELLENT
Fluorescence NONE
Inscription(s) LG656498455

Comments: HEARTS & ARROWS
As Grown - No indication of post-growth treatment.
This Laboratory Grown Diamond was created by High Pressure High Temperature (HPHT) growth process.
Type II

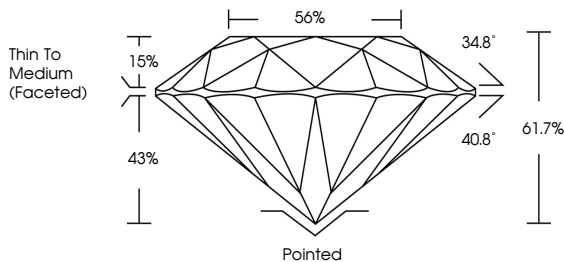


October 11, 2024
IGI Report No LG656498455
ROUND BRILLIANT
8.08 - 8.10 X 4.99 MM
2.01 CARATS D
VVS 2 IDEAL 61.7% 56%
Thin To Medium (Faceted)
Pointed EXCELLENT EXCELLENT NONE
None LG656498455
Comments: HEARTS & ARROWS
As Grown - No indication of post-growth treatment.
This Laboratory Grown Diamond was created by High Pressure High Temperature (HPHT) growth process.
Type II

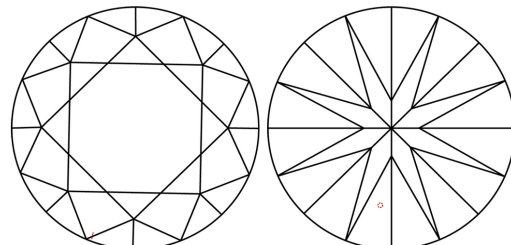


Sample Image Used

PROPORTIONS



CLARITY CHARACTERISTICS



KEY TO SYMBOLS

Red symbols indicate internal characteristics.
Green symbols indicate external characteristics.



COLOR

D E F G H I J Faint Very Light Light

CLARITY

IF VVS 1-2 VS 1-2 SI 1-2 I 1-3
Internally Flawless Very Very Slightly Included Very Slightly Included Slightly Included Included

