



**ELECTRONIC COPY**

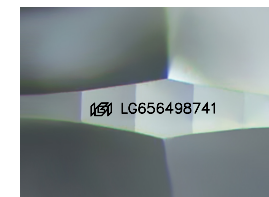
LG656498741  
Report verification at [igi.org](http://igi.org)



October 6, 2024  
IGI Report Number **LG656498741**  
Description **LABORATORY GROWN DIAMOND**  
Shape and Cutting Style **CUSHION BRILLIANT**  
Measurements **8.17 X 5.83 X 3.89 MM**

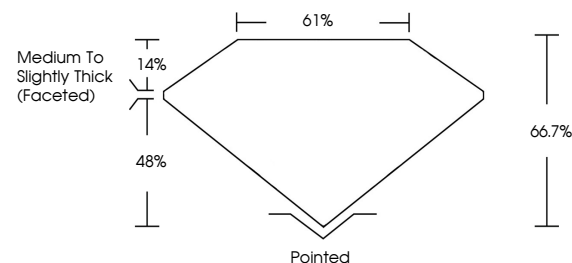
**GRADING RESULTS**

Carat Weight **1.55 CARAT**  
Color Grade **E**  
Clarity Grade **VVS 2**

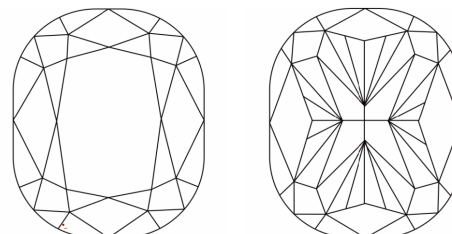


Sample Image Used

**PROPORTIONS**



**CLARITY CHARACTERISTICS**



**KEY TO SYMBOLS**

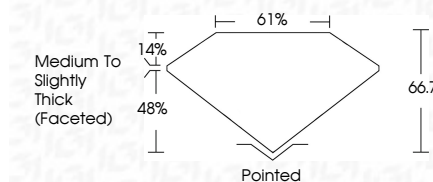
Red symbols indicate internal characteristics.  
Green symbols indicate external characteristics.

**COLOR**

D E F G H I J Faint Very Light Light

**CLARITY**

IF	VS <sup>1-2</sup>	VS <sup>1-2</sup>	SI <sup>1-2</sup>	I <sup>1-3</sup>
Internally Flawless	Very Very Slightly Included	Very Slightly Included	Slightly Included	Included



**ADDITIONAL GRADING INFORMATION**

Polish **EXCELLENT**  
Symmetry **EXCELLENT**  
Fluorescence **NONE**  
Inscription(s) **IGI LG656498741**  
Comments: As Grown - No indication of post-growth treatment.  
This Laboratory Grown Diamond was created by High Pressure High Temperature (HPHT) growth process.  
Type II



October 6, 2024  
IGI Report No **LG656498741**  
**CUSHION BRILLIANT**  
8.17 X 5.83 X 3.89 MM  
Carat Weight **1.55 CARAT**  
Color Grade **E**  
Clarity Grade **VVS 2**  
Depth **66.7%**  
Table **61%**  
Girdle **Medium to Slightly Thick (Faceted)**  
Culet **Pointed**  
Polish **EXCELLENT**  
Symmetry **EXCELLENT**  
Fluorescence **NONE**  
Inscription(s) **IGI LG656498741**  
Comments: As Grown - No indication of post-growth treatment.  
This Laboratory Grown Diamond was created by High Pressure High Temperature (HPHT) growth process.  
Type II

