



ELECTRONIC COPY

LG657416251
Report verification at igi.org



October 6, 2024

IGI Report Number LG657416251

Description LABORATORY GROWN DIAMOND

Shape and Cutting Style ROUND BRILLIANT

Measurements 7.22 - 7.28 X 4.55 MM

GRADING RESULTS

Carat Weight 1.50 CARAT

Color Grade D

Clarity Grade VVS 2

Cut Grade EXCELLENT

October 6, 2024

IGI Report Number LG657416251

Description LABORATORY GROWN DIAMOND

Shape and Cutting Style ROUND BRILLIANT

Measurements 7.22 - 7.28 X 4.55 MM

GRADING RESULTS

Carat Weight 1.50 CARAT

Color Grade D

Clarity Grade VVS 2

Cut Grade EXCELLENT

ADDITIONAL GRADING INFORMATION

Polish EXCELLENT

Symmetry EXCELLENT

Fluorescence NONE

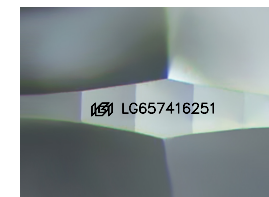
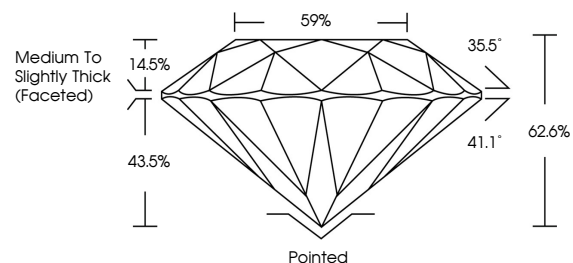
Inscription(s) IGI LG657416251

Comments: As Grown - No indication of post-growth treatment.

This Laboratory Grown Diamond was created by High Pressure High Temperature (HPHT) growth process.

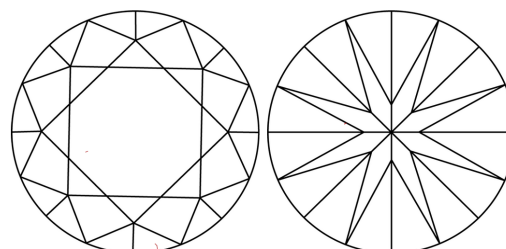
Type II

PROPORTIONS



Sample Image Used

CLARITY CHARACTERISTICS



KEY TO SYMBOLS

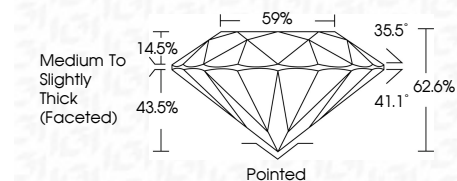
Red symbols indicate internal characteristics. Green symbols indicate external characteristics.

COLOR

D E F G H I J Faint Very Light Light

CLARITY

IF VVS 1-2 VS 1-2 SI 1-2 I 1-3 Internally Flawless Very Very Slightly Included Very Slightly Included Slightly Included Included



ADDITIONAL GRADING INFORMATION

Polish EXCELLENT

Symmetry EXCELLENT

Fluorescence NONE

Inscription(s) IGI LG657416251

Comments: As Grown - No indication of post-growth treatment.

This Laboratory Grown Diamond was created by High Pressure High Temperature (HPHT) growth process.

Type II



IGI



Table with 2 columns: Property and Value. Includes: October 6, 2024, IGI Report No LG657416251, ROUND BRILLIANT, 7.22 - 7.28 X 4.55 MM, 1.50 CARAT, D, EXCELLENT, VVS 2, 62.6%, 59%, Medium To Slightly Thick (Faceted), Pointed, EXCELLENT, EXCELLENT, NONE, IGI LG657416251, Comments: As Grown - No indication of post-growth treatment. This Laboratory Grown Diamond was created by High Pressure High Temperature (HPHT) growth process. Type II