



**ELECTRONIC COPY**

## LABORATORY GROWN DIAMOND REPORT

October 5, 2024	
IGI Report Number	LG657416990
Description	LABORATORY GROWN DIAMOND
Shape and Cutting Style	EMERALD CUT
Measurements	7.79 X 5.44 X 3.60 MM

## GRADING RESULTS

Carat Weight	1.50 CARAT
Color Grade	E
Clarity Grade	SI 1

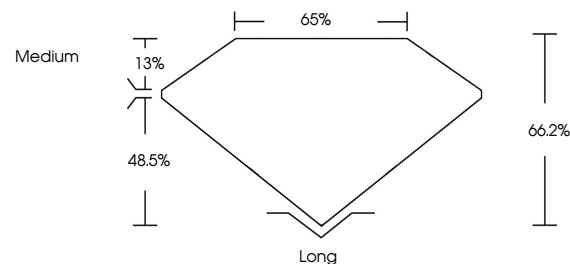
### ADDITIONAL GRADING INFORMATION

Polish	EXCELLENT
Symmetry	EXCELLENT
Fluorescence	NONE
Inscription(s)	 LG657416990

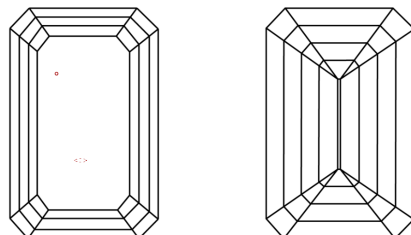
Comments: This Laboratory Grown Diamond was created by Chemical Vapor Deposition (CVD) growth process.  
Type IIa

LG657416990  
Report verification at [igi.org](https://igi.org)

## PROPORTIONS

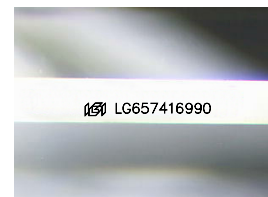


## CLARITY CHARACTERISTICS



## KEY TO SYMBOLS

Red symbols indicate internal characteristics.  
Green symbols indicate external characteristics.



Sample Image Used

**COLOR**

D E F G H I J Faint Very Light Light

## CLARITY

IF	VVS <sup>1-2</sup>	VS <sup>1-2</sup>	SI <sup>1-2</sup>	I <sup>1-3</sup>
Internally Flawless	Very Very Slightly Included	Very Slightly Included	Slightly Included	Included



© IGI 2020, International Gemological Institute

FD - 10 20

**www.igi.org**

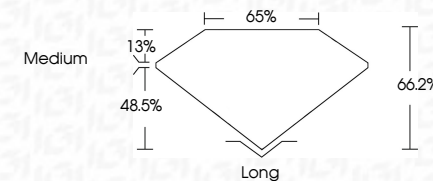
## LABORATORY GROWN DIAMOND REPORT



October 5, 2024	
IGI Report Number	LG657416990
Description	LABORATORY GROWN DIAMOND
Shape and Cutting Style	EMERALD CUT
Measurements	7.79 X 5.44 X 3.60 MM

## GRADING RESULTS

Carat Weight	1.50 CARAT
Color Grade	E
Clarity Grade	SI 1



### ADDITIONAL GRADING INFORMATION

Polish	EXCELLENT
Symmetry	EXCELLENT
Fluorescence	NONE
Inscription(s)	 LG667416990
<p>Comments: This Laboratory Grown Diamond was created by Chemical Vapor Deposition (CVD) growth process.</p> <p>Type IIa</p>	



October 5, 2024  
GI Report No LG657416990

1.79 X 5.44 X 3.60 MM	1.50 CARAT
Carat Weight	\$1
Color Grade	66.2%
Clarity Grade	65%
Depth	Medium
Table	Long
Grade	EXCELLENT
Quiet	EXCELLENT
Polish	NONE
Symmetry	
Fluorescence	

**Comments:**  
This Laboratory Grown Diamond was  
created by Chemical Vapor Deposition  
(CVD) growth process.