



ELECTRONIC COPY

LG657417507 Report verification at igi.org



October 12, 2024
IGI Report Number LG657417507
Description LABORATORY GROWN DIAMOND
Shape and Cutting Style CUT CORNERED RECTANGULAR MODIFIED BRILLIANT
Measurements 9.53 X 6.95 X 4.69 MM
GRADING RESULTS
Carat Weight 3.03 CARATS
Color Grade FANCY VIVID YELLOW
Clarity Grade VVS 2

October 12, 2024
IGI Report Number LG657417507
Description LABORATORY GROWN DIAMOND
Shape and Cutting Style CUT CORNERED RECTANGULAR MODIFIED BRILLIANT
Measurements 9.53 X 6.95 X 4.69 MM

GRADING RESULTS

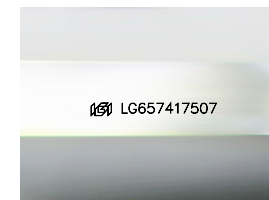
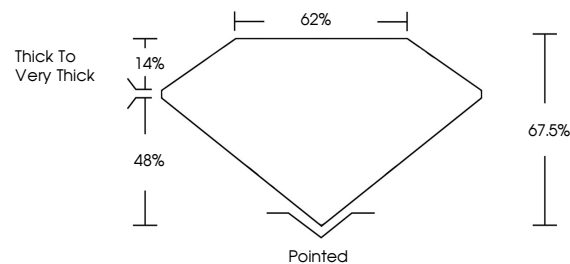
Carat Weight 3.03 CARATS
Color Grade FANCY VIVID YELLOW
Clarity Grade VVS 2

ADDITIONAL GRADING INFORMATION

Polish EXCELLENT
Symmetry EXCELLENT
Fluorescence NONE
Inscription(s) LG657417507

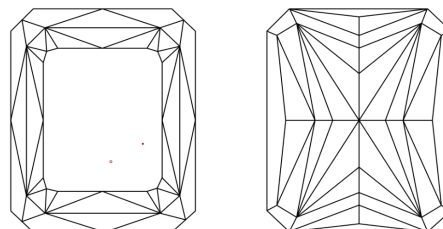
Comments: This Laboratory Grown Diamond was created by Chemical Vapor Deposition (CVD) growth process.

PROPORTIONS



Sample Image Used

CLARITY CHARACTERISTICS



KEY TO SYMBOLS

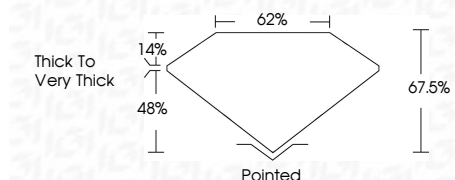
Red symbols indicate internal characteristics.
Green symbols indicate external characteristics.

COLOR

D E F G H I J Faint Very Light Light

CLARITY

Table mapping clarity grades (IF, VVS 1-2, VS 1-2, SI 1-2, I 1-3) to their descriptions (Internally Flawless, Very Very Slightly Included, etc.)



ADDITIONAL GRADING INFORMATION

Polish EXCELLENT
Symmetry EXCELLENT
Fluorescence NONE
Inscription(s) LG657417507
Comments: This Laboratory Grown Diamond was created by Chemical Vapor Deposition (CVD) growth process.



IGI



October 12, 2024
IGI Report No LG657417507
CUT CORNERED RECT. MODIFIED BRILLIANT
9.53 X 6.95 X 4.69 MM
3.03 CARATS
FANCY VIVID YELLOW
VVS 2
67.0%
62%
Thick to Very Thick
Pointed
EXCELLENT
EXCELLENT
NONE
LG657417507

Comments: This Laboratory Grown Diamond was created by Chemical Vapor Deposition (CVD) growth process.