



ELECTRONIC COPY

LG657417509 Report verification at igi.org



October 12, 2024 IGI Report Number LG657417509 Description LABORATORY GROWN DIAMOND Shape and Cutting Style CUT CORNERED RECTANGULAR MIXED CUT Measurements 9.62 X 6.98 X 4.79 MM GRADING RESULTS Carat Weight 3.05 CARATS Color Grade FANCY INTENSE YELLOW Clarity Grade VVS 2

October 12, 2024 IGI Report Number LG657417509 Description LABORATORY GROWN DIAMOND Shape and Cutting Style CUT CORNERED RECTANGULAR MIXED CUT Measurements 9.62 X 6.98 X 4.79 MM

GRADING RESULTS

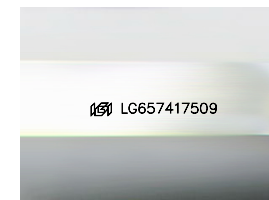
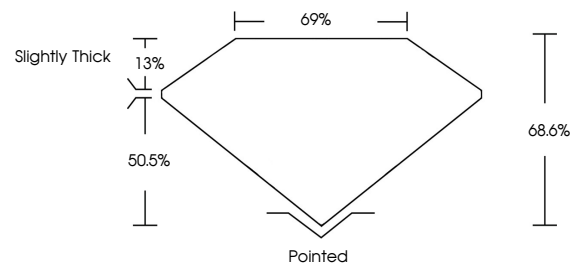
Carat Weight 3.05 CARATS Color Grade FANCY INTENSE YELLOW Clarity Grade VVS 2

ADDITIONAL GRADING INFORMATION

Polish EXCELLENT Symmetry EXCELLENT Fluorescence NONE Inscription(s) LG657417509

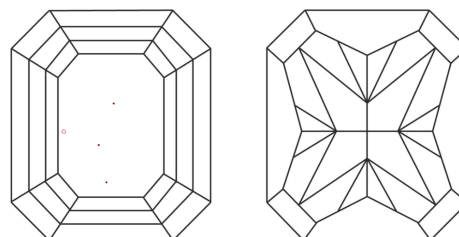
Comments: This Laboratory Grown Diamond was created by Chemical Vapor Deposition (CVD) growth process.

PROPORTIONS



Sample Image Used

CLARITY CHARACTERISTICS



KEY TO SYMBOLS

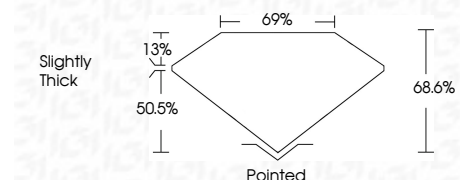
Red symbols indicate internal characteristics. Green symbols indicate external characteristics.

COLOR

D E F G H I J Faint Very Light Light

CLARITY

Table with 5 columns: IF (Internally Flawless), VS 1-2 (Very Slightly Included), VS 1-2 (Very Slightly Included), SI 1-2 (Slightly Included), I 1-3 (Included)



ADDITIONAL GRADING INFORMATION

Polish EXCELLENT Symmetry EXCELLENT Fluorescence NONE Inscription(s) LG657417509 Comments: This Laboratory Grown Diamond was created by Chemical Vapor Deposition (CVD) growth process.



Summary of report details including date, report number, description, measurements, grading results, and additional information.