



ELECTRONIC COPY

LG657417510
Report verification at igi.org



October 12, 2024
IGI Report Number LG657417510
Description LABORATORY GROWN DIAMOND
Shape and Cutting Style CUT CORNERED RECTANGULAR MODIFIED BRILLIANT
Measurements 9.84 X 6.83 X 4.70 MM
GRADING RESULTS
Carat Weight 3.05 CARATS
Color Grade FANCY INTENSE YELLOW
Clarity Grade VVS 2

LABORATORY GROWN DIAMOND REPORT

October 12, 2024
IGI Report Number LG657417510
Description LABORATORY GROWN DIAMOND
Shape and Cutting Style CUT CORNERED RECTANGULAR MODIFIED BRILLIANT
Measurements 9.84 X 6.83 X 4.70 MM

GRADING RESULTS

Carat Weight 3.05 CARATS
Color Grade FANCY INTENSE YELLOW
Clarity Grade VVS 2

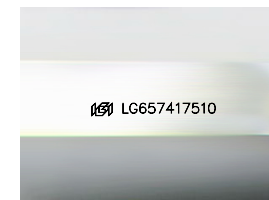
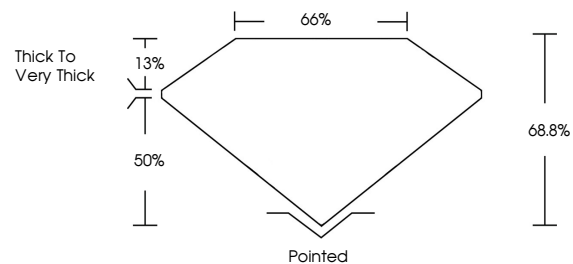
ADDITIONAL GRADING INFORMATION

Polish EXCELLENT
Symmetry EXCELLENT
Fluorescence NONE
Inscription(s) LG657417510

Comments: This Laboratory Grown Diamond was created by Chemical Vapor Deposition (CVD) growth process.

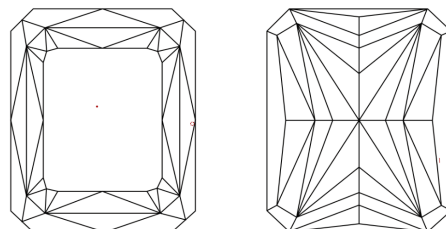
Secondary color: Brown

PROPORTIONS



Sample Image Used

CLARITY CHARACTERISTICS



KEY TO SYMBOLS

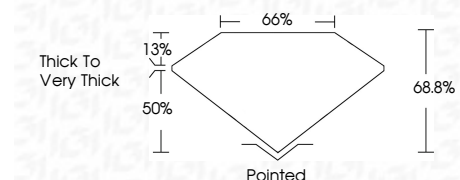
Red symbols indicate internal characteristics.
Green symbols indicate external characteristics.

COLOR

D E F G H I J Faint Very Light Light

CLARITY

IF WVS 1-2 VS 1-2 SI 1-2 I 1-3
Internally Flawless Very Very Slightly Included Very Slightly Included Slightly Included Included



ADDITIONAL GRADING INFORMATION

Polish EXCELLENT
Symmetry EXCELLENT
Fluorescence NONE
Inscription(s) LG657417510
Comments: This Laboratory Grown Diamond was created by Chemical Vapor Deposition (CVD) growth process.
Secondary color: Brown



IGI



October 12, 2024
IGI Report No LG657417510
CUT CORNERED RECT. MODIFIED BRILLIANT
9.84 X 6.83 X 4.70 MM
3.05 CARATS
FANCY INTENSE YELLOW
VVS 2
68.8%
65%
Thick to Very Thick
Pointed
EXCELLENT
EXCELLENT
NONE
NONE
LG657417510

Comments: This Laboratory Grown Diamond was created by Chemical Vapor Deposition (CVD) growth process.
Secondary color: Brown